

2.8 UNUSUAL NOISE IN NAC DARK FRAMES

Dark frame data for the NAC exhibit coherent noise patterns from an unknown source (presumably environmental). The granular pattern appears in parts or all of most of the images from the data set. Bias frame images (0 second exposure) do not show this pattern.

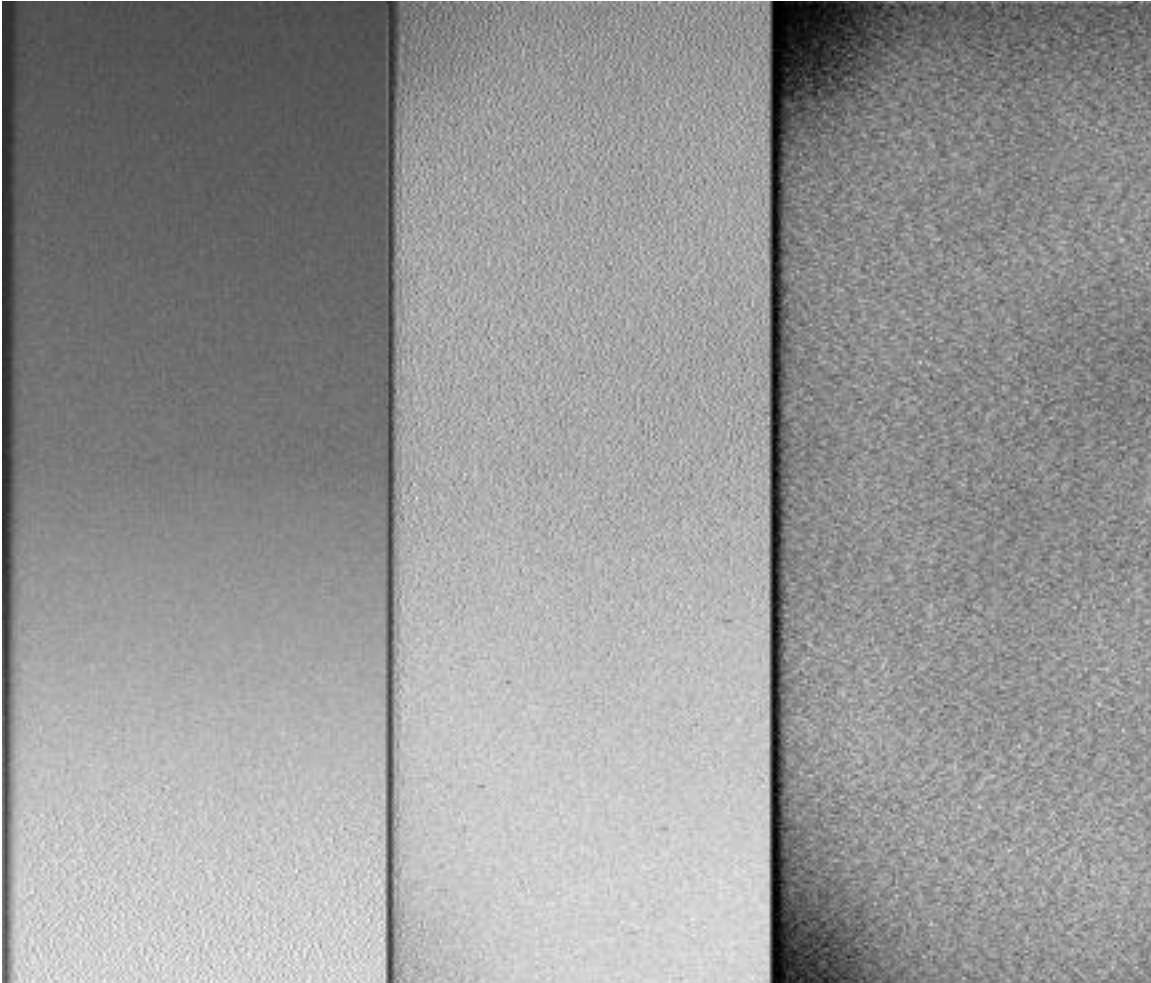


Figure 2.8-1 - NAC Dark Frame Noise (3 examples)