

TOST Handoff Package - Update

014TI (T7)

Segment Boundary 2005-249T20:30 – 2005-251T12:52

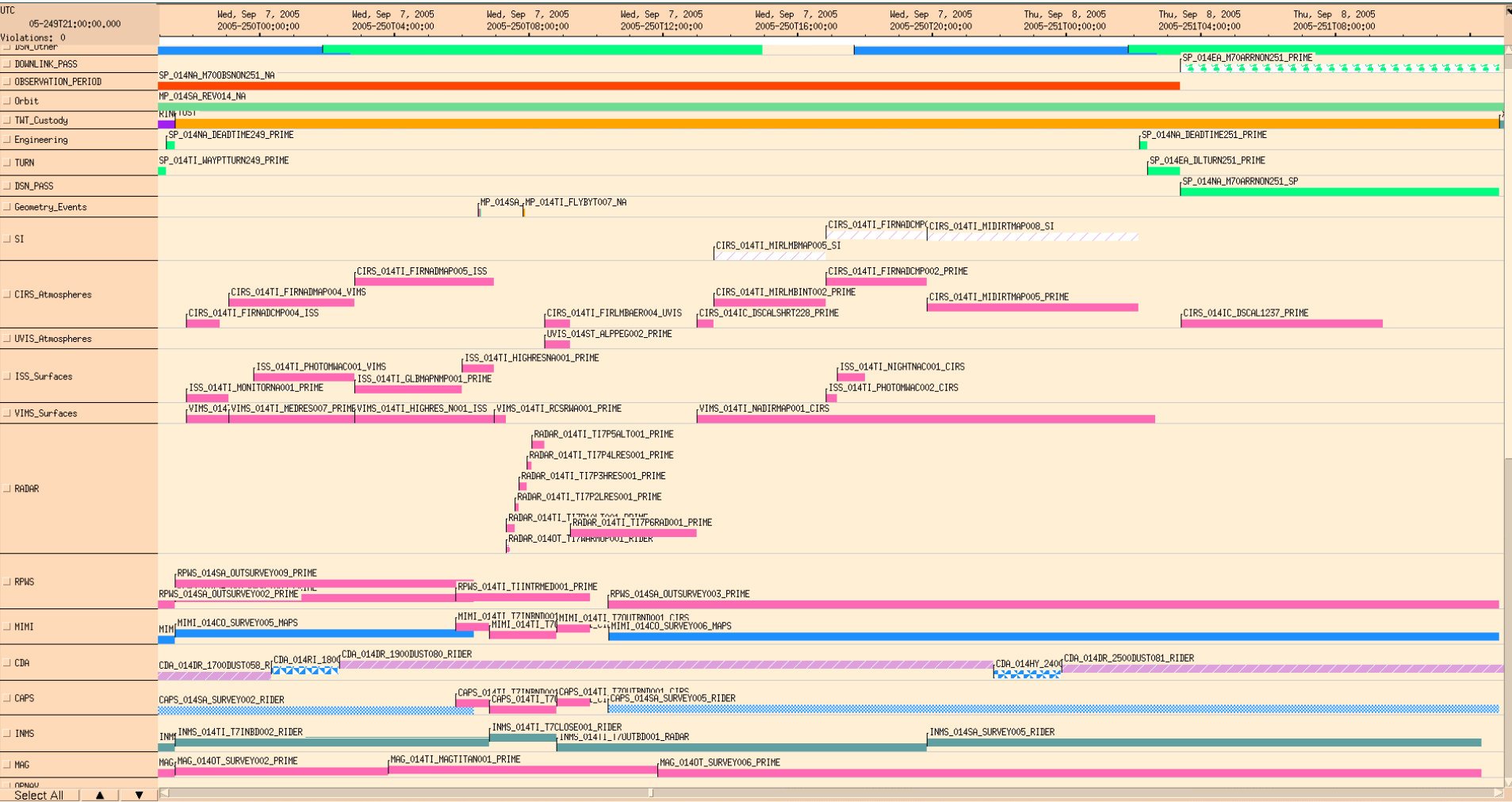
Titan C/A=2005-250T07:50:26, 950km

Epoch = E014_Titan7 = 2005-250T07:50:26

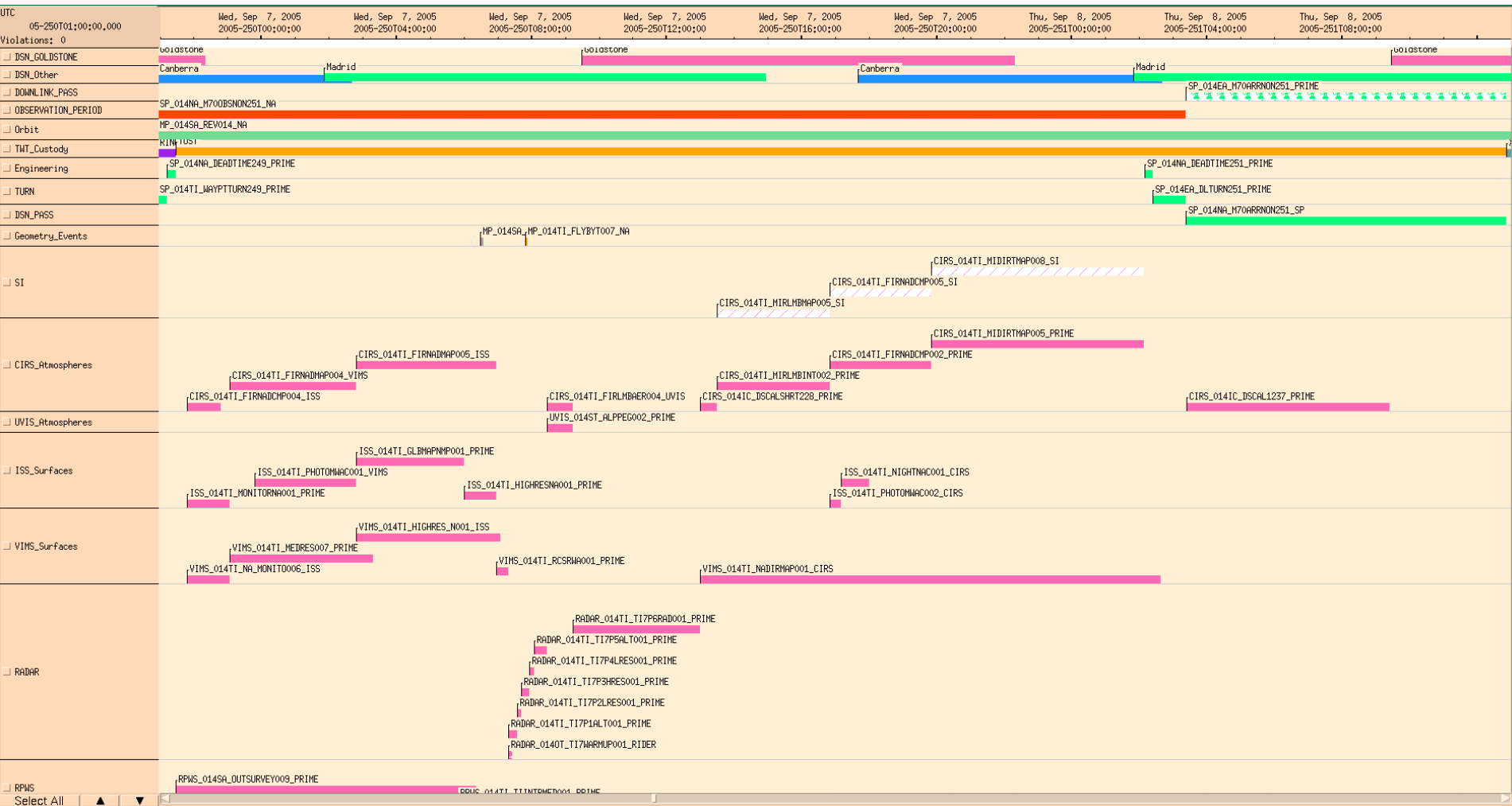
October 3, 2002 (updated waypoint strategy, Opmode transition)

Scott Bolton, Candy Hansen, Trina Ray, Leo Cheng

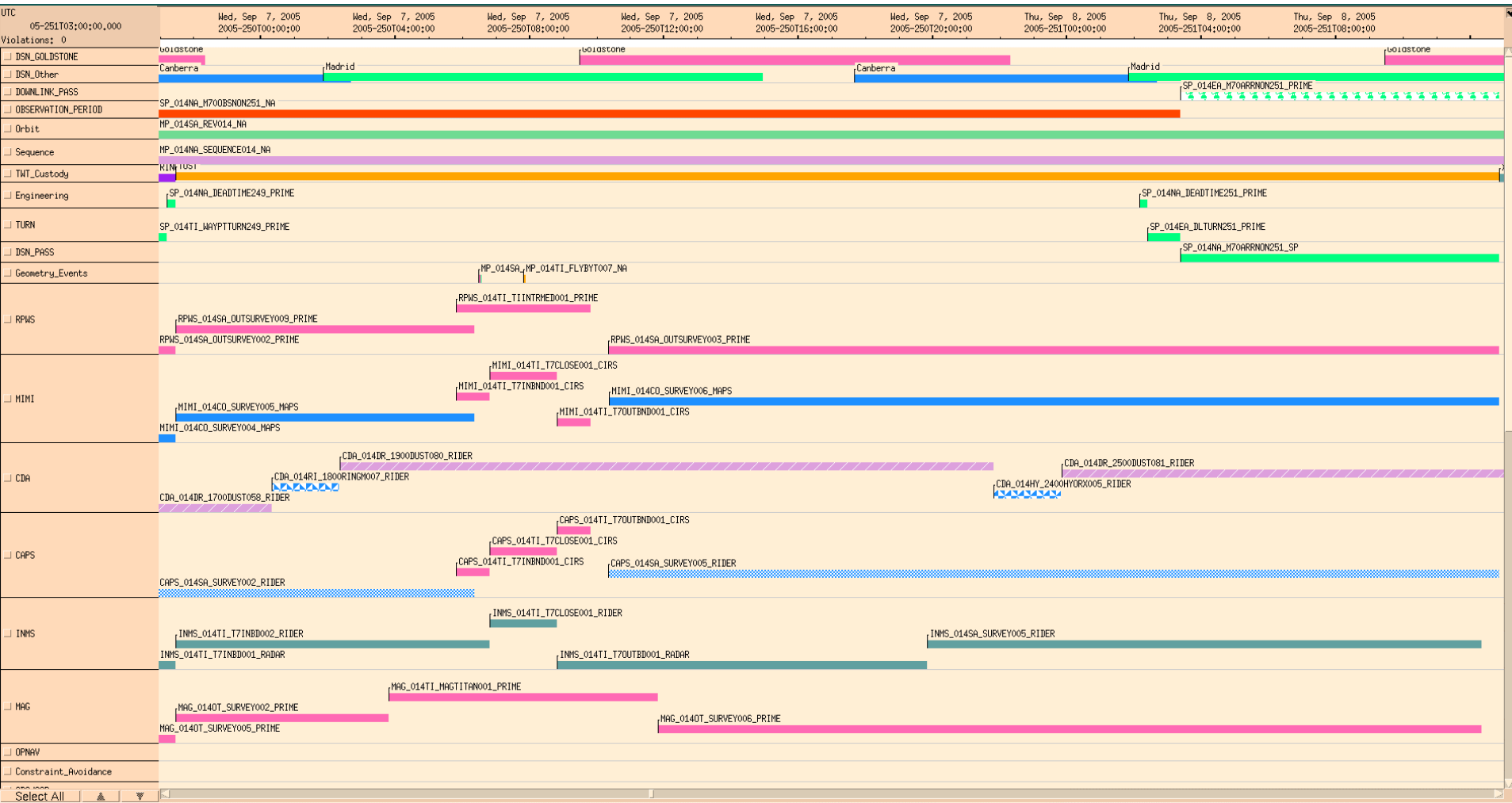
014TI (Titan-7 Flyby)



014TI (Titan-7 Flyby)



014TI (Titan-7 Flyby)



014TI_T7 TOL

014TI (T7)

OBS_NAM	SCET START	E_REL	SCET END	DDThmmss DUR	kbps RATE	mbits SSR VOL	OPMODES	TLMODES
CAPS_014SA_SURVEY002_RIDER	2005-249T01:20:00		2005-250T06:22:35	01T05:02:35	1000	104.56	DFPW	S_N_ER3
INMS_014SA_SURVEY003_RIDER	2005-249T01:20:00		2005-249T19:50:26	00T18:30:26	50	3.33		
MAG_014OT_SURVEY005_PRIME	2005-249T01:20:00		2005-249T21:30:00	00T20:10:00	600	43.56		
MIMI_014CO_SURVEY004_MAPS	2005-249T01:20:00		2005-249T21:30:00	00T20:10:00	900	65.34		
RPWS_014SA_OUTSURVEY002_PRIME	2005-249T15:10:00		2005-249T21:30:00	00T06:20:00	1310	29.87		
CDA_014DR_1700DUST058_RIDER	2005-249T20:20:56		2005-250T00:21:05	00T04:00:09	524	7.55		
INMS_014TI_T7INBD001_RADAR	2005-249T20:22:36		2005-249T21:30:00	00T01:07:24	100	0.4		
SP_014NA_M70OBSNON251_NA	2005-249T20:30:00		2005-251T03:22:00	01T06:52:00	0	0		
SP_014TI_WAYPTTURN249_PRIME	2005-249T20:30:00		2005-249T21:15:00	00T00:45:00	0	0		
SP_014NA_DEADTIME249_PRIME	2005-249T21:15:00		2005-249T21:30:00	00T00:15:00	0	0		
INMS_014TI_T7INBD002_RIDER	2005-249T21:30:00		2005-250T06:50:26	00T09:20:26	50	1.68		
MAG_014OT_SURVEY002_PRIME	2005-249T21:30:00		2005-250T03:50:26	00T06:20:26	600	13.7		
MIMI_014CO_SURVEY005_MAPS	2005-249T21:30:00		2005-250T06:23:00	00T08:53:00	900	28.78		
RPWS_014SA_OUTSURVEY009_PRIME	2005-249T21:30:00		2005-250T06:22:36	00T08:52:36	1310	41.86		
CIRS_014TI_FIRNADCMP004_ISS	2005-249T21:50:26	E014_Titan7-000T10:00	2005-249T22:50:26	00T01:00:00	4000	14.4		
ISS_014TI_MONITORNA001_PRIME	2005-249T21:50:26	E014_Titan7-000T10:00	2005-249T23:05:26	00T01:15:00	0	280		
VIMS_014TI_NA_MONITO006_ISS	2005-249T21:50:26	E014_Titan7-000T10:00	2005-249T23:05:26	00T01:15:00	4000	18		
CIRS_014TI_FIRNADMAP004_VIMS	2005-249T23:05:26	E014_Titan7-000T08:45	2005-250T02:50:26	00T03:45:00	3000	40.5		
VIMS_014TI_MEDRES007_PRIME	2005-249T23:05:26	E014_Titan7-000T08:45	2005-250T03:20:26	00T04:15:00	19607.8	300		
ISS_014TI_PHOTOMWAC001_VIMS	2005-249T23:50:26	E014_Titan7-000T08:00	2005-250T02:50:26	00T03:00:00	0	28		
CDA_014RI_1800RINGM007_RIDER	2005-250T00:22:05		2005-250T02:22:05	00T02:00:00	524	3.77		
CDA_014DR_1900DUST080_RIDER	2005-250T02:23:05		2005-250T21:49:10	00T19:26:05	149.9	10.49		
CIRS_014TI_FIRNADMAP005_ISS	2005-250T02:50:26	E014_Titan7-000T05:00	2005-250T06:59:26	00T04:09:00	3000	44.82		
ISS_014TI_GLBMAPNMP001_PRIME	2005-250T02:50:26	E014_Titan7-000T05:00	2005-250T06:02:26	00T03:12:00	0	171		
VIMS_014TI_HIGHRES_N001_ISS	2005-250T02:50:26	E014_Titan7-000T05:00	2005-250T07:05:26	00T04:15:00	13071.9	200		
MAG_014TI_MAGTITAN001_PRIME	2005-250T03:50:26	E014_Titan7-000T04:00	2005-250T11:50:26	00T08:00:00	1976	56.91		
CAPS_014TI_T7INBD001_CIRS	2005-250T05:50:26	E014_Titan7-000T02:00	2005-250T06:50:26	00T01:00:00	4000	14.4		
MIMI_014TI_T7INBD001_CIRS	2005-250T05:50:26	E014_Titan7-000T02:00	2005-250T06:50:26	00T01:00:00	2000	7.2		
RPWS_014TI_TIIINTRMED001_PRIME	2005-250T05:50:26	E014_Titan7-000T02:00	2005-250T09:50:26	00T04:00:00	12499.4	179.99		
ISS_014TI_HIGHRESNA001_PRIME	2005-250T06:02:26	E014_Titan7-000T01:48	2005-250T06:59:26	00T00:57:00	0	285		
MP_014SA_RPXDESCEN014_NA	2005-250T06:30:13		2005-250T06:30:14	00T00:00:01	0	0		
CAPS_014TI_T7CLOSE001_CIRS	2005-250T06:50:26	E014_Titan7-000T01:00	2005-250T08:50:26	00T02:00:00	16000	115.2		
INMS_014TI_T7CLOSE001_RIDER	2005-250T06:50:26	E014_Titan7-000T01:00	2005-250T08:50:26	00T02:00:00	1498	10.79		
MIMI_014TI_T7CLOSE001_CIRS	2005-250T06:50:26	E014_Titan7-000T01:00	2005-250T08:50:26	00T02:00:00	2000	14.4		
VIMS_014TI_RCSRWA001_PRIME	2005-250T06:59:26	E014_Titan7-000T00:51	2005-250T07:20:26	00T00:21:00	7142.9	9	RAD_WU	
RADAR_014OT_TI7WARMUP001_RIDER	2005-250T07:10:26	E014_Titan7-000T00:40	2005-250T07:27:26	00T00:07:00	255.4	0.11	RAD_RCS	S_N_ER5a
SP_014TI_WAYPTTURN250_PRIME	2005-250T07:20:26	E014_Titan7-000T00:30	2005-250T07:27:26	00T00:07:00	0	0		
RADAR_014TI_TI7P1ALT001_PRIME	2005-250T07:27:26	E014_Titan7-000T00:23	2005-250T07:35:26	00T00:08:00	29986.6	14.39		S_N_ER8
RADAR_014TI_TI7P2LRES001_PRIME	2005-250T07:35:26	E014_Titan7-000T00:15	2005-250T07:43:56	00T00:08:30	194985.6	99.44		
RADAR_014TI_TI7P3HRES001_PRIME	2005-250T07:43:56	E014_Titan7-000T00:06	2005-250T07:56:56	00T00:13:00	364800	284.54		
MP_014TI_FLYBYT007_NA	2005-250T07:50:26		2005-250T07:50:27	00T00:00:01	0	0		
RADAR_014TI_TI7P4LRES001_PRIME	2005-250T07:56:56	E014_Titan7+000T00:06	2005-250T08:05:26	00T00:08:30	194985.6	99.44		
RADAR_014TI_TI7P5ALT001_PRIME	2005-250T08:05:26	E014_Titan7+000T00:15	2005-250T08:29:26	00T00:24:00	29986.6	43.18		
CIRS_014TI_FIRLIMBAER004_UVIS	2005-250T08:29:26	E014_Titan7+000T00:39	2005-250T09:14:26	00T00:45:00	4000	10.8		

014TI_T7 TOL

014TI (T7)

OBS_NAM	SCET START	E_REL	SCET END	DDThmmss DUR	kbps RATE	mbits SSR VOL	OPMODES	TLMODES
UVIS_014ST_ALPPEG002_PRIME	2005-250T08:29:26	E014_Titan7+000T00:39	2005-250T09:14:26	00T00:45:00	32096	86.66		S_N_ER3
CAPS_014TI_T7OUTBND001_CIRS	2005-250T08:50:26	E014_Titan7+000T01:00	2005-250T09:50:26	00T01:00:00	4000	14.4		
INMS_014TI_T7OUTBD001_RADAR	2005-250T08:50:26	E014_Titan7+000T01:00	2005-250T19:50:26	00T11:00:00	100	3.96		
MIMI_014TI_T7OUTBND001_CIRS	2005-250T08:50:26	E014_Titan7+000T01:00	2005-250T09:50:26	00T01:00:00	2000	7.2		
Opmode transition from RCS to RWA	2005-250T09:14:26	E014_Titan7+000T01:24	2005-250T09:37:26	00T00:23:00	0	0	RAD_WU	
RADAR_014TI_TI7P6RAD001_PRIME	2005-250T09:37:26	E014_Titan7+000T01:47	2005-250T13:00:26	00T03:23:00	4997.8	58.77		S_N_ER8
CAPS_014SA_SURVEY005_RIDER	2005-250T10:22:36		2005-251T12:52:00	01T02:29:24	1000	95.36		
RPWS_014SA_OUTSURVEY003_PRIME	2005-250T10:22:36		2005-251T12:52:00	01T02:29:24	1310	124.93		
MIMI_014CO_SURVEY006_MAPS	2005-250T10:23:00		2005-251T12:52:00	01T02:29:00	1100	104.87		
MAG_014OT_SURVEY006_PRIME	2005-250T11:50:26	E014_Titan7+000T04:00	2005-251T12:19:50	01T00:29:24	600	52.9		
SP_014TI_WAYPTURN2502_PRIME	2005-250T13:00:26	E014_Titan7+000T05:10	2005-250T13:30:26	00T00:30:00	0	0		
CIRS_014IC_DSCALSHRT228_RIDER	2005-250T13:00:26	E014_Titan7+000T05:10	2005-250T13:30:26	00T00:30:00	4000	7.2	ORS_RWA	S_N_ER3
VIMS_014TI_NADIRMAP001_CIRS	2005-250T13:00:26	E014_Titan7+000T05:10	2005-251T02:38:26	00T13:38:00	4441.7	218		
CIRS_014TI_MIRLMBINT002_PRIME	2005-250T13:30:26	E014_Titan7+000T05:40	2005-250T16:50:26	00T03:20:00	4000	48		
CIRS_014TI_MIRLMBMAP005_SI	2005-250T13:30:26	E014_Titan7+000T05:40	2005-250T16:50:26	00T03:20:00	0	7		
CIRS_014TI_FIRNADCMP002_PRIME	2005-250T16:50:26	E014_Titan7+000T09:00	2005-250T19:50:26	00T03:00:00	4000	43.2		
CIRS_014TI_FIRNADCMP005_SI	2005-250T16:50:26	E014_Titan7+000T09:00	2005-250T19:50:26	00T03:00:00	0	4		
ISS_014TI_PHOTOMWAC002_CIRS	2005-250T16:50:26	E014_Titan7+000T09:00	2005-250T17:10:26	00T00:20:00	0	26		
ISS_014TI_NIGHTNAC001_CIRS	2005-250T17:10:26	E014_Titan7+000T09:20	2005-250T18:00:26	00T00:50:00	0	100		
CIRS_014TI_MIDIRTMAP005_PRIME	2005-250T19:50:26	E014_Titan7+000T12:00	2005-251T02:08:26	00T06:18:00	2000	45.36		
CIRS_014TI_MIDIRTMAP008_SI	2005-250T19:50:26	E014_Titan7+000T12:00	2005-251T02:08:26	00T06:18:00	0	7		
INMS_014SA_SURVEY005_RIDER	2005-250T19:50:26	E014_Titan7+000T12:00	2005-251T12:19:50	00T16:29:24	50	2.97		
CDA_014HY_2400HYORX005_RIDER	2005-250T21:50:10		2005-250T23:50:10	00T02:00:00	524	3.77		
CDA_014DR_2500DUST081_RIDER	2005-250T23:51:09		2005-257T16:09:55	06T16:18:46	149.9	86.49		
SP_014NA_DEADTIME251_PRIME	2005-251T02:09:00		2005-251T02:24:00	00T00:15:00	0	0		
SP_014EA_DLTURN251_PRIME	2005-251T02:24:00		2005-251T03:22:00	00T00:58:00	0	0		
SP_014EA_M70ARRNON251_PRIME	2005-251T03:22:00		2005-251T12:52:00	00T09:30:00	0	0	DFPW	
SP_014NA_M70ARR2ND251_SP	2005-251T03:22:00		2005-251T12:52:00	00T09:30:00	0	0		
SP_014NA_M70ARRNON251_SP	2005-251T03:22:00		2005-251T12:52:00	00T09:30:00	0	0		
TLM Mode transition to RTE_N_SPB_110k	2005-251T03:22:00		2005-251T03:53:00	00T00:31:00				RTE_N_SPB_110600
CIRS_014IC_DSCAL1237_PRIME	2005-251T03:24:00		2005-251T09:24:00	00T06:00:00	4000	86.4		
TLM Mode transition to RTE_N_SPB_124k	2005-251T03:53:00		2005-251T04:53:00	00T01:00:00				RTE_N_SPB_124425
TLM Mode transition to RTE_N_SPB_142k	2005-251T04:53:00		2005-251T11:53:00	00T09:00:00				RTE_N_SPB_142200
TLM Mode transition to RTE_N_SPB_124k	2005-251T11:53:00		2005-251T12:38:00	00T01:00:00				RTE_N_SPB_124425
TLM Mode transition to RTE_N_SPB_110k	2005-251T12:38:00		2005-251T12:52:00	00T00:14:00				RTE_N_SPB_110600

Data Volume Summary

 SSR MANAGEMENT TOOL (SMT) REPORT FOR CIMS_014TI_T7_020925_d1_obs.apf
 USING DICTIONARY FILE /cas/msspath/MSS.D8.0.3/base/mss_sw/smt/dict/dict.txt

SPECIAL ACTIVITIES REPORT

ACTIVITY NAME	ACTIVITY TYPE	START TIME	DATA CLASS	NOTIFICATION
CIRS_014TI_MIRLMBMAP005_SI	ISS_SUPPORT_IMAGING	2005-250T13:30:26.000	SUPP_IMG	
CIRS_014TI_FIRNADCMP005_SI	ISS_SUPPORT_IMAGING	2005-250T16:50:26.000	SUPP_IMG	
CIRS_014TI_MIDIRTMAP008_SI	ISS_SUPPORT_IMAGING	2005-250T19:50:26.000	SUPP_IMG	

TELEMETRY MODE REPORT

SCET	TELEMETRY MODE	REQUEST
2005-249T21:30:00	S_N_ER_3	SP_014NA_M70OBSNON251_NA
E014_Titan7-000T00:40:00	S_N_ER_5A	SP_014NA_M70OBSNON251_NA
E014_Titan7-000T00:23:00	S_N_ER_8	SP_014NA_M70OBSNON251_NA
E014_Titan7+000T00:39:00	S_N_ER_3	SP_014NA_M70OBSNON251_NA
E014_Titan7+000T01:54:00	S_N_ER_8	SP_014NA_M70OBSNON251_NA
E014_Titan7+000T05:10:00	S_N_ER_3	SP_014NA_M70OBSNON251_NA
2005-251T03:22:00	RTE_N_SPB_110600	SP_014EA_M70ARRNON251_PRIME
2005-251T03:53:00	RTE_N_SPB_124425	SP_014EA_M70ARRNON251_PRIME
2005-251T04:53:00	RTE_N_SPB_142200	SP_014EA_M70ARRNON251_PRIME
2005-251T11:53:00	RTE_N_SPB_124425	SP_014EA_M70ARRNON251_PRIME
2005-251T12:38:00	RTE_N_SPB_110600	SP_014EA_M70ARRNON251_PRIME

Data Volume Summary

DATA VOLUME SUMMARY

Playback	Start	End	PLAYBACK CAPACITY	OBSERVATION_PERIOD				DOWNLINK_PASS		TOTAL PLAYBK	CARRIED	
	doy hh:mm	doy hh:mm	(Mb)	NORM_SCI	OPNV_HVS	SCI_HK	ENGR	NORM_SCI	ENGR	(Mb)	(%)	(MB)
SP_014EA_M70ARRNON251_PRIME	251 03:22	251 12:52	3943	3430	0	24	80	229	56	3819	3	0

SSR PARTITION SIZE SUMMARY

OBSERVATION PERIOD	SSR A/B		
	P4 Size (Frames)	P5 Size (Frames)	P6 Size (Frames)
SP_014NA_M70OBSNON251_NA	202928	226	25596

DATA VOLUME REPORT

Event	Start	End	CAPS	CDA	CIRS	INMS	ISS	MAG	MIMI	RADAR	RPWS	UVIS	VIMS	PROBE	ENGR	TOTAL
	doy hh:mm	doy hh:mm	(Mb)	(Mb)	(Mb)	(Mb)	(Mb)	(Mb)	(Mb)	(Mb)	(Mb)	(Mb)	(Mb)	(Mb)	(Mb)	(Mb)
OBSERVATION_NOR	249 20:30	251 03:22	240.7	27.2	254.3	18.1	890.0	106.3	128.1	609.0	306.7	86.7	745.0	0.0	0.0	3412.1
OBSERVATION_SI	249 20:30	251 03:22	0.0	0.0	18.0	0.0	0.0	0.0	0.0	0.0	0.0	0.0	0.0	0.0	0.0	18.0
SP_014EA_M70ARRNON251_PRIME	251 03:22	251 12:52	34.2	5.1	86.4	1.6	0.0	19.4	37.6	0.0	44.8	0.0	0.0	0.0	0.0	229.1

Data Volume Summary

DATA POLICING TABLES

Event	Start doy hh:mm	End doy hh:mm	CAPS (Pkts)	CDA (Pkts)	CIRS (Pkts)	INMS (Pkts)	ISS (Pkts)	MAG (Pkts)	MIMI (Pkts)	RADAR (Pkts)	RPWS (Pkts)	UVIS (Pkts)	VIMS (Pkts)	DPT #
OBSERVATION_NOR	249 20:30	251 03:22	30100	6500	31800	2300	116900	13500	16100	80200	40300	10000	126600	1
OBSERVATION_SI	249 20:30	251 03:22	0	0	0	0	2300	0	0	0	0	0	0	1/89
SP_014EA_M70ARRNON251_PRIME	251 03:22	251 12:52	4300	1300	10800	300	0	2500	4800	0	5900	0	0	2

Downlink pass: SP_014EA_M70ARRNON251_PRIME start time = 2005-251T03:22:00.000 end time = 2005-251T12:52:00.000
OTM duration =
PB DSN Delay Time (secs) set for this downlink pass = 300
Rate playback delay (secs) = 60
Playback capacity (MB) = 3942.66
Total recorded volume that needs to be played back (MB) == 3818.74
Carryover (MB) == 0Mb

Pingpong is to occur during recording to partition 4
in the observation period SP_014NA_M70OBSNON251_NA
 observation period 's start time = 2005-249T20:30:00.000
The total recording volume to partition 4 is 3534.11 Mb.
Single P4 size - spareframes = 1782.25 Mb.

With pingpong during observation period SP_014NA_M70OBSNON251_NA:
Total unused space (P4 of both SSRs) - spareframes = 33.9105 Mb.

***WARNING: Event CDA_014DR_2500DUST081_RIDER
has been scheduled crossing sequence boundary.
Event start-time = 2005-250T23:51:09.000
Event end-time = 2005-257T16:09:55.000
Last downlink_pass' end-time = 2005-251T12:52:00.000
The leftover after the last downlink pass end will NOT be accounted for.

END OF REPORT FOR CIMS_014TI_T7_020925_dl_obs.apf

014TI_T7 Attitude Strategy

014TI (T7)

Request	Riders	Start (SCET)	Start (Epoch)	Dur	End (SCET)	Observation Attitude		Comments
						Primary	Secondary	
SP_014TI_WAYPTTURN249_PRIME		2005-249T20:30:00		00T00:45:00	2005-249T21:15:00	ISS_NAC to Titan	POS_X to NEP	
New Waypoint		2005-249T21:15:00		00T10:12:26	2005-250T07:27:26	ISS_NAC to Titan (-10,0,0 offset)	POS_X to NEP	
SP_014NA_DEADTIME249_PRIME		2005-249T21:15:00		00T00:15:00	2005-249T21:30:00	ISS_NAC to Titan	POS_X to NEP	
ISS_014TI_MONITORNA001_PRIME	C, V	2005-249T21:50:26	E014_Titan7-000T10:00	00T01:15:00	2005-249T23:05:26	ISS_NAC to Titan	POS_X to NEP	
VIMS_014TI_MEDRES007_PRIME	C, I	2005-249T23:05:26	E014_Titan7-000T08:45	00T04:15:00	2005-250T03:20:26	ISS_NAC to Titan	POS_X to NEP	
ISS_014TI_GLBMAPNMP001_PRIME	C, V	2005-250T02:50:26	E014_Titan7-000T05:00	00T03:12:00	2005-250T06:02:26	ISS_NAC to Titan	POS_X to NEP	
ISS_014TI_HIGHRESNA001_PRIME	C, V	2005-250T06:02:26	E014_Titan7-000T01:48	00T00:57:00	2005-250T06:59:26	ISS_NAC to Titan	POS_X to NEP	
VIMS_014TI_RCSRWA001_PRIME	R	2005-250T06:59:26	E014_Titan7-000T00:51	00T00:21:00	2005-250T07:20:26	ISS_NAC to Titan	POS_X to NEP	
SP_014TI_WAYPTTURN250_PRIME		2005-250T07:20:26	E014_Titan7-000T00:30	00T00:07:00	2005-250T07:27:26	NEG_Z to Titan (0,0, -30 offset)	NEG_X to Titan SC RAM	
New Waypoint		2005-250T07:20:26		00T06:10:00	2005-250T13:00:26	NEG_Z to Titan (0,0, -30 offset)	NEG_X to Titan SC RAM	
RADAR_014TI_Ti7P1ALT001_PRIME		2005-250T07:27:26	E014_Titan7-000T00:23	00T00:08:00	2005-250T07:35:26	NEG_Z to Titan	PIC	
RADAR_014TI_Ti7P2LRES001_PRIME		2005-250T07:35:26	E014_Titan7-000T00:15	00T00:08:30	2005-250T07:43:56	NEG_Z to Titan	PIC	
RADAR_014TI_Ti7P3HRES001_PRIME		2005-250T07:43:56	E014_Titan7-000T00:06	00T00:13:00	2005-250T07:56:56	NEG_Z to Titan	PIC	
RADAR_014TI_Ti7P4LRES001_PRIME		2005-250T07:56:56	E014_Titan7+000T00:06	00T00:08:30	2005-250T08:05:26	NEG_Z to Titan	PIC	
Custom Period						Custom	Custom	RADAR >UVIS>RADAR
RADAR_014TI_Ti7P5ALT001_PRIME		2005-250T08:05:26	E014_Titan7+000T00:15	00T00:24:00	2005-250T08:29:26	NEG_Z to Titan	PIC	Hand off at XXX
UVIS_014ST_ALPPEG002_PRIME	C	2005-250T08:29:26	E014_Titan7+000T00:39	00T00:45:00	2005-250T09:14:26	UVIS_FUV to star	PIC	Pick up at XXX; Hand off at YYY; RA/DEC = 23.04/15.12
RADAR_014TI_Ti7P6RAD001_PRIME		2005-250T09:37:26	E014_Titan7+000T01:47	00T03:23:00	2005-250T13:00:26	NEG_Z to Titan	PIC	Pick up at YYY, Hand off at -Z to Titan (0,0,-30); NEG_X to NEP
SP_014TI_WAYPTURN2502_PRIME		2005-250T13:00:26	E014_Titan7+000T05:10	00T00:30:00	2005-250T13:30:26	ISS_NAC to Titan	NEG_X to NEP	
New Waypoint		2005-250T13:00:26		00T13:13:58	2005-251T02:24:00	ISS_NAC to Titan	POS_X to NTP	
CIRS_014TI_MIRLMBINT002_PRIME	V	2005-250T13:30:26	E014_Titan7+000T05:40	00T03:20:00	2005-250T16:50:26	CIRS_FP1 to Titan	PIC	Secondary axis rotating to follow the limb.
CIRS_014TI_FIRNADCMP002_PRIME	V	2005-250T16:50:26	E014_Titan7+000T09:00	00T03:00:00	2005-250T19:50:26	CIRS_FP1 to Titan	POS_X to NTP	
CIRS_014TI_MIDIRTMAP005_PRIME	V	2005-250T19:50:26	E014_Titan7+000T12:00	00T06:18:00	2005-251T02:08:26	CIRS_FP1 to Titan	POS_X to NTP	
SP_014NA_DEADTIME251_PRIME		2005-251T02:09:00		00T00:15:00	2005-251T02:24:00	ISS_NAC to Titan	POS_X to NTP	
SP_014EA_DLTURN251_PRIME		2005-251T02:24:00		00T00:58:00	2005-251T03:22:00	XBAND to Earth	POS_X to NTP	
SP_014EA_M70ARRNON251_PRIME	DSCAL	2005-251T03:22:00		00T09:30:00	2005-251T12:52:00	XBAND to Earth	POS_X to NTP	

DSN Requests

CASSINI DSN COVERAGE SUMMARY for CIMS_014TI_T7_020925_dl_obs.apf generated on 2002-Sep-25 13:23:06
 (+ = pass overlaps with previous pass; * = in conflict with DSN weekly maintenance)

C	ANT	ID	BOT_TO_EOT ERT	DUR hh:mm	XMT_AT ERT	2WAY_PERIOD ERT	DUR hh:mm	DL_PERIOD ERT	DL_PERIOD SCET	DUR hh:mm	NOTE	CALS min	RADIO_CONFIG UD D UD MAR	DATA_RATES kbps
M	70ARR	54	251T04:40-14:15	9:35	251T04:50	07:34-14:14	6:40	251T04:44-14:14	251T03:22-12:52	9:30	---	15/15	-X - - -0	110,124,142,124,110
+M	70ARR	63	*251T04:40-14:15	9:35	251T04:50	07:34-14:14	6:40	251T04:44-14:14	251T03:22-12:52	9:30	---	15/15	XX - - -0	110,124,142,124,110

Open Issues

- Pointing Issues
 - There is no “pad time” around UVIS Stellar Occ (UVIS_014ST_ALPPEG002_PRIME)
- Data Volume Issues
 - 33.9 MB of extra data volume
- CIMS Issues
 - None
- Power Issues
 - RADAR RCS to RADAR RW transition outbound is red. OK to ignore per L. Sakamoto
- Flight Rule/Mission Plan Guidelines and Constraint Issues
 - Are we on thruster control at 1300km?
 - Thruster transition is at E014_Titan7-000T00:51, Altitude at that time is ~5,246 km (source Titan Tour Atlas)
 - Return to wheels is at E014_Titan7+000T01:54, Altitude at that time is 971,720km (source Titan Tour Atlas)
 - Are all ORS observations are epoch relative?
 - Yes.
 - Moveable block margin called out explicitly?
 - Yes, 15 minutes at the start and end of T7 timeline
 - Waypoint Strategy (considering dynamic constraint violations)
 - AACS working this issue
- DSN Issues
 - DSS-63 currently overlaps with DSN weekly maintenance.
 - Without array capability, and without re-integration, data volume will have to be carried over to next X-discipline segment.