



Juno JIRAM

Report JM0440

JIR-IAPS-SY-002-2023
Version 1.0

January 07, 2023

Prepared by:
R. Noschese, A. Cicchetti, R. Sordini

Approved by:
A. Mura

		JIR-IAPS-SY-002-2023		
		Issue	1.0	07/01/2023
	JUNO/JIRAM		Page	2

Table of Contents

1	INTRODUCTION.....	3
2	REFERENCES.....	3
3	ACTIVITY DESCRIPTION.....	3
4	RADIATION SEQUENCES	6
5	SCIENTIFIC GOALS	6
6	DATA COLLECTION OVERVIEW.....	8
	A.1 Commanding file (SASF).....	11

List of Figures

<i>Figure 1:</i>	Simulation with JSPT (JIRAM Software Planning Tool), coverage of the South Pole with filter M. The overlapping yellow strips represent the predicted FOVs.	4
<i>Figure 2:</i>	Simulation with JSPT. Coverage of the South Pole with filter L, the magenta line represents the theoretical position of the main auroral oval.	5
<i>Figure 3:</i>	Atmospheric Mapping: Hot Spots - Imager filter M.	6

List of Tables

<i>Table 1:</i>	<i>Scientific Goals</i>	8
<i>Table 2:</i>	<i>Data Overview</i>	10

			JIR-IAPS-SY-002-2023		
			Issue	1.0	07/01/2023
	JUNO/JIRAM		Page	3	of

1 INTRODUCTION

This document describes the activities that JIRAM performed during the activity period JM0440 (PJ044), with particular attention to the comparison between the expected and returned data, keeping track of the instrument configuration with the commanding file (SASF).

2 REFERENCES

Adriani A., M.L. Moriconi, A. Mura, F. Tosi, G. Sindoni, R. Noschese, A. Cicchetti, G. Filacchione (2016), Juno's Earth flyby: the Jovian infrared Auroral Mapper preliminary results, 2016. *Astrophys. Space Sci.* <https://doi.org/10.1007/s10509-016-2842-9>

Adriani, A., Filacchione, G., Di Iorio, T., Turrini, D., Noschese, R., Cicchetti, A., Grassi, D., Mura, A., Sindoni, G., Zambelli, M., Piccioni, G., Capria, M. T., Tosi, F., Orosei, R., Dinelli, B. M., Moriconi, M. L., Roncon, E., Lunine, J. I., Becker, H. N., Bini, A., Barbis, A., Calamai, L., Pasqui, C., Nencioni, S., Rossi, M., Lastrì, M., Formaro, R., Olivieri, A., 2017. JIRAM, the Jovian Infrared Auroral Mapper. *Space Sci. Rev.* 213, 1–4, pp 393-446. <https://doi.org/10.1007/s11214-014-0094-y>.

Becker, H.N., Alexander, J.W., Adriani, A., Mura, A., Cicchetti, A., Noschese, R., Jørgensen, J.L., Denver, T., Sushkova, J., Jørgensen, A., Benn, M., Connerney, J.E.P., Bolton, S.J., the Selex Galileo Juno SRU Team, Allison, J., Watts, S., Adumitroaie, V., Manor-Chapman, E.A., Daubar, I.J., Lee, C., Kang, S., McAlpine, W.J., Di Iorio, T., Pasqui, C., Barbis, A., Lawton, P., Spalsbury, L., Loftin, S., Sun, J., 2017. The Juno Radiation Monitoring (RM) Investigation. *Space Sci. Rev.* 213, 1-4, pp 507-545. <https://10.1007/s11214-017-0345-9>.

R. Noschese, A. Cicchetti, R. Sordini, M. Cartacci, S. Brooks, M. Lastrì, A. Adriani, A. Mura, G. Filacchione, H. Becker, A. Bini, C. Pasqui, A. Migliorini, M.L. Moriconi, D. Grassi, F. Altieri, B.M. Dinelli, G. Piccioni, F. Tosi, D. Turrini, G. Sindoni, A. Olivieri, C. Plainaki. Juno/JIRAM: planning and commanding activities. *Adv. Space Res.* (2019) <https://doi.org/10.1016/j.asr.2019.09.052>

3 ACTIVITY DESCRIPTION

During the PJ044 pass, JIRAM performed observations of the cyclones of the South Pole and North pole (see fig. 1 and fig. 2) and of the planet's limbs. In addition JIRAM achieved observations of the Jupiter's moons Ganymede and IO (not reported in the figures). Note that there is a spectral observation corresponding to each observation taken with the imager. Details about imager/spectrometer coupling and more in general about the instrument and its performance can be found in Adriani et al. (2017), Noschese et al. (2019).

Due to an uncertainty in the actual pointing of the JIRAM frame (which is affected by the position of the despinning mirror at the time of the observation), the JIRAM team found that the precision of the reconstruction of the geometry of both IMG and SPE pixels should be revised by a value of no less than 0.1 degrees. We want to underline that this issue was only discovered during JM0131,

when we started to do systematic limb observations near perijove (PJ) and we could compare the calculated position of the planet's limb, using the reconstructed kernels, with respect to its actual position in the image we collected with our instrument.

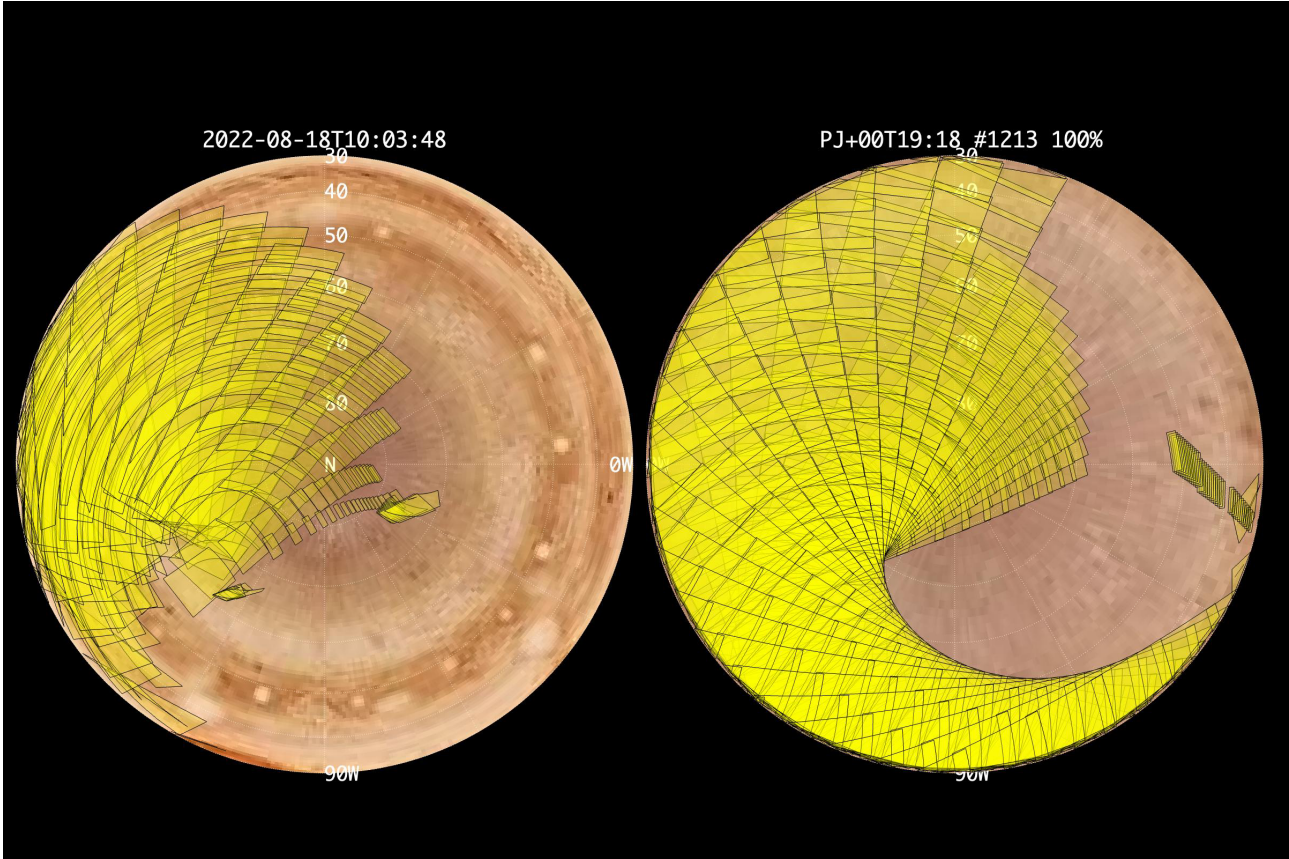


Figure 1: Simulation with JSPT (JIRAM Software Planning Tool), coverage of the South Pole with filter M. The overlapping yellow strips represent the predicted FOVs.

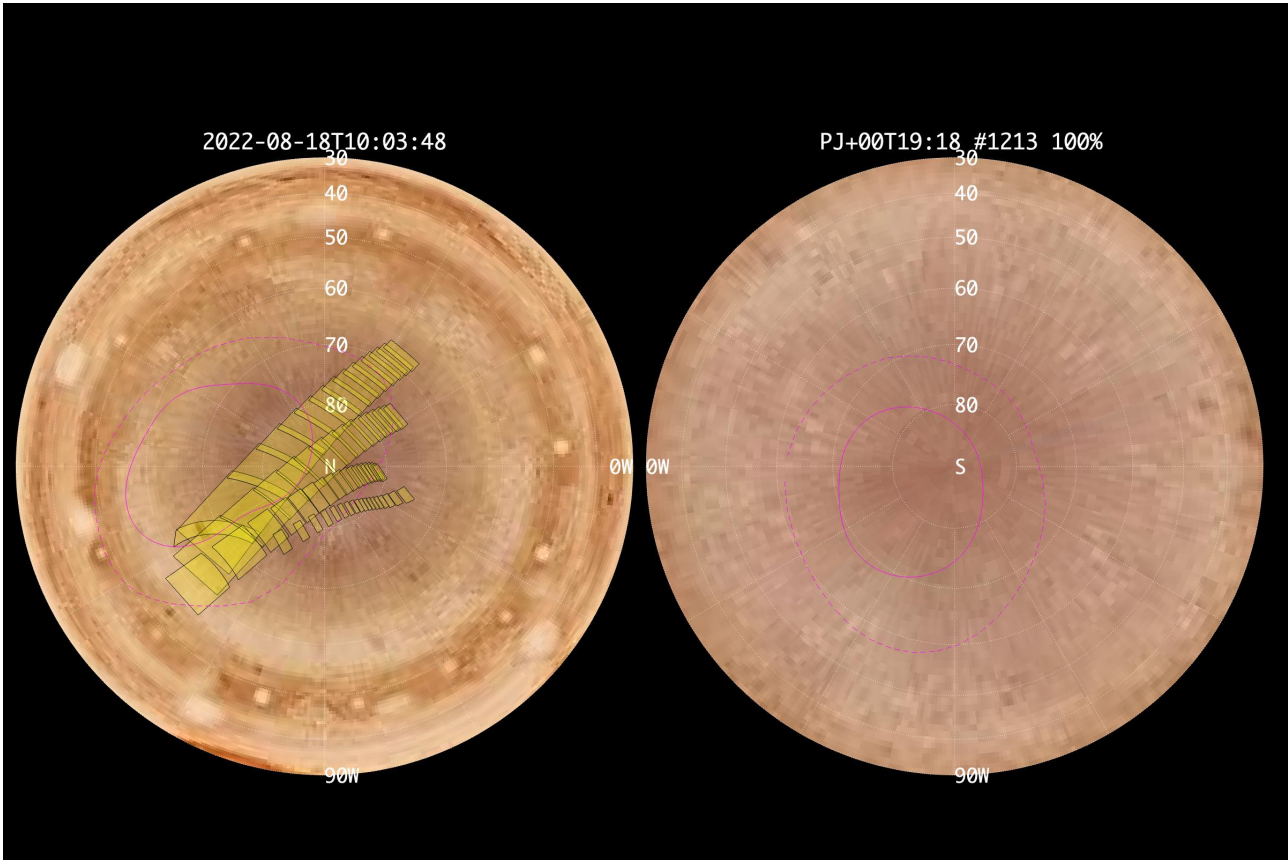


Figure 2: Simulation with JSPT. Coverage of the South Pole with filter L, the magenta line represents the theoretical position of the main auroral oval.

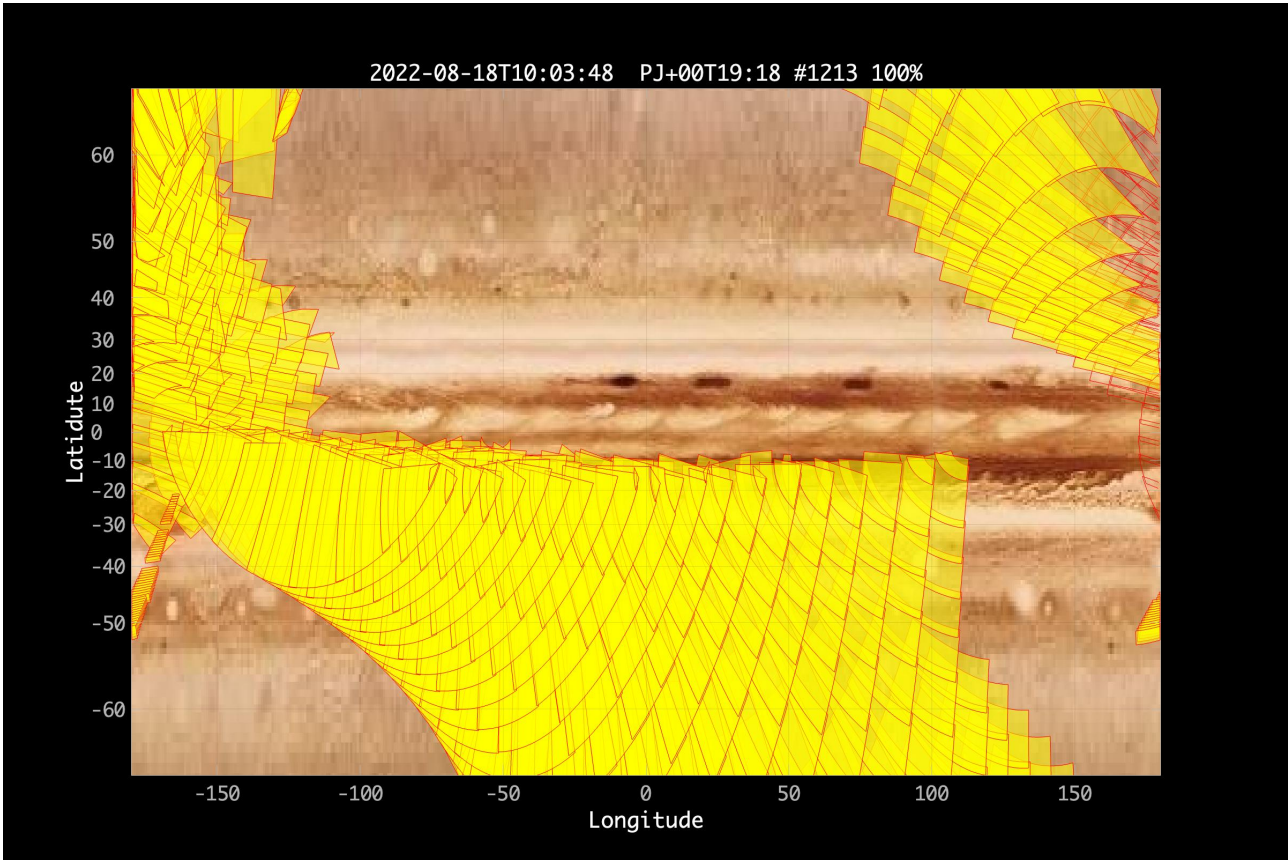


Figure 3: Atmospheric Mapping: Hot Spots - Imager filter M.

4 RADIATION SEQUENCES

N/A

5 SCIENTIFIC GOALS

Below is a table that describes for each science block in the commanding file the relative operational mode and the scientific objectives. The files relating to the various science blocks are shown in the file “JIR_STATUS_EDR_2022228T201052_V01.CSV” in the INDEX directory.



JRM (sarf)	Operational Mode	Goals
JRM_004	SCI_I1_S1	IO
JRM_005	SCI_I1_S1	IO
JRM_006	SCI_I2_S1	ATMOSPHERE
JRM_007	SCI_I2_S1	ATMOSPHERE
JRM_008	SCI_I2_S1	ATMOSPHERE
JRM_009	SCI_I2_S1	ATMOSPHERE
JRM_010	SCI_I2_S1	LIMB DOWN
JRM_011	SCI_I2_S1	LIMB DOWN
JRM_012	SCI_I2_S1	LIMB DOWN
JRM_013	SCI_I2_S1	LIMB DOWN
JRM_014	SCI_I2_S1	LIMB DOWN
JRM_015	SCI_I2_S1	NORTH POLE
JRM_016	SCI_I2_S1	NORTH POLE
JRM_018	SCI_I2_S1	NORTH POLE
JRM_019	SCI_I2_S1	NORTH POLE
JRM_020	SCI_I2_S1	NORTH POLE
JRM_021	SCI_I2_S1	NORTH POLE
JRM_022	SCI_I2_S1	NORTH POLE
JRM_023	SCI_I1_S1	NORTH POLE
JRM_024	SCI_I1_S1	NORTH POLE
JRM_025	SCI_I1_S1	NORTH POLE
JRM_026	SCI_I1_S1	NORTH POLE
JRM_027	SCI_I2_S1	LIMB UP
JRM_028	SCI_I2_S1	LIMB UP
JRM_032	SCI_I2_S1	NADIR
JRM_033	SCI_I2_S1	NADIR
JRM_034	SCI_I2_S1	NADIR
JRM_035	SCI_I2_S1	NADIR
JRM_036	SCI_I2_S1	NADIR
JRM_037	SCI_I2_S1	SOUTH POLE
JRM_038	SCI_I1_S1	SOUTH POLE
JRM_039	SCI_I2_S1	SOUTH POLE
JRM_040	SCI_I2_S1	SOUTH POLE
JRM_041	SCI_I2_S1	SOUTH POLE
JRM_042	SCI_I2_S1	SOUTH POLE
JRM_043	SCI_I2_S1	SOUTH POLE
JRM_044	SCI_I1_S1	SOUTH POLE
JRM_045	SCI_I2_S1	SOUTH POLE
JRM_046	SCI_I2_S1	ATMOSPHERE
JRM_047	SCI_I2_S1	ATMOSPHERE
JRM_049	SCI_I2_S1	ATMOSPHERE
JRM_050	SCI_I2_S1	ATMOSPHERE
JRM_051	SCI_I2_S1	ATMOSPHERE
JRM_052	SCI_I2_S1	ATMOSPHERE
JRM_054	SCI_I1_S1	ATMOSPHERE
JRM_055	SCI_I2_S1	ATMOSPHERE
JRM_056	SCI_I2_S1	ATMOSPHERE
JRM_057	SCI_I2_S1	ATMOSPHERE
JRM_058	SCI_I2_S1	ATMOSPHERE
JRM_059	SCI_I2_S1	ATMOSPHERE

JRM_060	SCI_I2_S1	ATMOSPHERE
JRM_061	SCI_I2_S1	ATMOSPHERE
JRM_062	SCI_I2_S1	ATMOSPHERE
JRM_063	SCI_I2_S1	ATMOSPHERE
JRM_064	SCI_I2_S1	ATMOSPHERE
JRM_065	SCI_I2_S1	ATMOSPHERE
JRM_066	SCI_I2_S1	ATMOSPHERE
JRM_072	SCI_I1_S1	GANYMEDE
JRM_073	SCI_I1_S1	GANYMEDE

Table 1: Scientific Goals.

6 DATA COLLECTION OVERVIEW

Below is a table that gives an overview of the data collected during the activity period JM0440. The table describes, for each science block in the commanding file, the programmed operational modes and the data actually collected.

JRM (sarf)	Operational Mode	Observations	Packets Retrieved	Packets Expected	Missing Observations SPE	Missing Observations IMG
JRM_004	SCI_I1_S1	10 IMG 10 SPE	120	120	0	0
JRM_005	SCI_I1_S1	10 IMG 10 SPE	120	120	0	0
JRM_006	SCI_I2_S1	30 IMG 30 SPE	270	270	0	0
JRM_007	SCI_I2_S1	28IMG 28 SPE	252	252	0	0
JRM_008	SCI_I2_S1	28IMG 28 SPE	252	252	0	0
JRM_009	SCI_I2_S1	26 IMG 26 SPE	234	234	0	0
JRM_010	SCI_I2_S1	15 IMG 15 SPE	135	135	0	0
JRM_011	SCI_I2_S1	13 IMG 13 SPE	117	117	0	0
JRM_012	SCI_I2_S1	13 IMG 13 SPE	117	117	0	0
JRM_013	SCI_I2_S1	13 IMG 13 SPE	117	117	0	0
JRM_014	SCI_I2_S1	11 IMG 11 SPE	99	99	0	0
JRM_015	SCI_I2_S1	20 IMG 20 SPE	180	180	0	0
JRM_016	SCI_I2_S1	18 IMG 18 SPE	162	162	0	0
JRM_018	SCI_I2_S1	18 IMG 18 SPE	162	162	0	0
JRM_019	SCI_I2_S1	18 IMG 18 SPE	162	162	0	0



JRM_020	SCI_I2_S1	18 IMG 18 SPE	162	162	0	0
JRM_021	SCI_I2_S1	18 IMG 18 SPE	162	162	0	0
JRM_022	SCI_I2_S1	18 IMG 18 SPE	162	162	0	0
JRM_023	SCI_I1_S1	20 IMG 20 SPE	240	240	0	0
JRM_024	SCI_I1_S1	18 IMG 18 SPE	162	162	0	0
JRM_025	SCI_I1_S1	18 IMG 18 SPE	162	162	0	0
JRM_026	SCI_I1_S1	18 IMG 18 SPE	162	162	0	0
JRM_027	SCI_I2_S1	15IMG 15 SPE	135	135	0	0
JRM_028	SCI_I2_S1	13 IMG 13 SPE	117	117	0	0
JRM_032	SCI_I2_S1	12 IMG 12SPE	108	108	0	0
JRM_033	SCI_I2_S1	12 IMG 12SPE	108	108	0	0
JRM_034	SCI_I2_S1	12 IMG 12SPE	108	108	0	0
JRM_035	SCI_I2_S1	12 IMG 12SPE	108	108	0	0
JRM_036	SCI_I2_S1	13 IMG 13 SPE	117	117	0	0
JRM_037	SCI_I2_S1	15 IMG 15 SPE	36	36	0	0
JRM_038	SCI_I1_S1	13 IMG 13 SPE	117	117	0	0
JRM_039	SCI_I2_S1	13 IMG 13 SPE	117	117	0	0
JRM_040	SCI_I2_S1	13 IMG 13 SPE	117	117	0	0
JRM_041	SCI_I2_S1	13 IMG 13 SPE	117	117	4	4
JRM_042	SCI_I2_S1	13 IMG 13 SPE	117	117	0	0
JRM_043	SCI_I2_S1	13 IMG 13 SPE	117	117	0	0
JRM_044	SCI_I1_S1	13 IMG 13 SPE	117	117	0	0
JRM_045	SCI_I2_S1	13 IMG 13 SPE	117	117	0	0
JRM_046	SCI_I2_S1	30 IMG 30 SPE	180	180	0	0
JRM_047	SCI_I2_S1	28 IMG 28 SPE	252	252	0	0
JRM_048	SCI_I2_S1	28 IMG 28 SPE	252	252	0	0
JRM_049	SCI_I2_S1	28 IMG 28 SPE	252	252	0	0
JRM_050	SCI_I2_S1	28 IMG 28 SPE	252	252	0	0

JRM_051	SCI_I2_S1	28 IMG 28 SPE	252	252	0	0
JRM_052	SCI_I2_S1	28 IMG 28 SPE	252	252	0	0
JRM_054	SCI_I1_S1	20 IMG 20 SPE	180	180	0	0
JRM_055	SCI_I2_S1	18 IMG 18 SPE	162	162	0	0
JRM_056	SCI_I2_S1	18 IMG 18 SPE	162	162	0	0
JRM_057	SCI_I2_S1	18 IMG 18 SPE	162	162	0	0
JRM_058	SCI_I2_S1	18 IMG 18 SPE	162	162	0	0
JRM_059	SCI_I2_S1	18 IMG 18 SPE	162	162	0	0
JRM_060	SCI_I2_S1	18 IMG 18 SPE	162	162	0	0
JRM_061	SCI_I2_S1	18 IMG 18 SPE	162	162	0	0
JRM_062	SCI_I2_S1	18 IMG 18 SPE	162	162	0	0
JRM_063	SCI_I2_S1	18 IMG 18 SPE	162	162	0	0
JRM_064	SCI_I2_S1	18 IMG 18 SPE	162	162	0	0
JRM_065	SCI_I2_S1	18 IMG 18 SPE	162	162	0	0
JRM_066	SCI_I2_S1	18 IMG 18 SPE	162	162	0	0
JRM_072	SCI_I1_S1	10IMG 10SPE	120	120	0	0
JRM_073	SCI_I1_S1	10 IMG 10 SPE	120	120	0	0

Table 2: Data Overview.

A.1 Commanding file (SASF)

```

CCSD3ZF0000100000001NJPL3KS0L015$$MARK$$;
MISSION_NAME = JUNO;
SPACECRAFT_NAME = JUNO;
DATA_SET_ID = SPACECRAFT_ACTIVITY_SEQUENCE_JRM;
FILE_NAME = jm0440_JRMa.sasf;
APPLICABLE_START_TIME = 2022-228T14:00:00.000;
APPLICABLE_STOP_TIME = 2022-271T17:00:00.000;
PRODUCT_CREATION_TIME = 2022-210T15:20:20.000;
PRODUCER_ID = JRMTEAM;
SEQ_ID = jm0440_JRMa;
HOST_ID = JRM_CMD_440_440_V03.jrm;
CCSD3RE000000$$MARK$$NJPL3IF0M01300000001;
$$JNO      SPACECRAFT ACTIVITY SEQUENCE FILE
*****
*PROJECT      JNO
*SPACECRAFT   61
*OPERATOR     JRMTEAM
*FILE_CPLT    TRUE
*DATE         Fri Jul 29 15:20:20 2022
*BEGIN        2022-228T14:00:00.000
*CUTOFF       2022-271T17:00:00.000
*TITLE        jm0440_JRMa
*EPOCHS_DEF
*jm0440_JRM,  2022-228T14:00:00.000
*EPOCHS_END
*Input files used:
*File Type   Last modified           File name
*PACKETS_NUMBER 10305
*****
$$EOH
$$EOD
request(JRM_Sequence_Management_Request,
        START_TIME,2022-228T14:00:00.000,
        TITLE, "JRM MAINTENANCE",
        REQUESTOR, "JRMTEAM",
        PROCESSOR, "VC2",
        KEY, "No_Key")

activity(1,
        SCHEDULED_TIME,\00:00:00\,FROM_REQUEST_START,
        SEQTRAN_directive
        (VML_START,2001-001T00:00:00.000,2030-
001T00:00:00.000,"ABSLTE","jm0440_JRM","jm0440_JRM.abs","d:/seq")
        ),
        command(2,
        SCHEDULED_TIME,\00:00:30\,FROM_PREVIOUS_START,
        FILE_DELETE("d:/seq/jm0440_JRM.abs")
        ),
        command(3,
        SCHEDULED_TIME,\043T02:59:58\,FROM_REQUEST_START,
        VM_LOAD(20,"d:/seq/jm0450_JRM.abs")
        ),
        end;

request(JRM_001,
        START_TIME,2022-228T14:46:30.000,
        TITLE, "jm0440_JRM Heater Op",
        REQUESTOR, "JRMTEAM",
        PROCESSOR, "VC2",
        KEY, "No_Key")
        command(1,
        SCHEDULED_TIME,\00:00:00\,FROM_REQUEST_START,
        THRM_SET_PT_SEL("JIRAM_OH","OPERATIONAL")
        ),

```

			JIR-IAPS-SY-002-2023	
			Issue	1.0
	JUNO/JIRAM		Page	12

```

command(2,
    SCHEDULED_TIME,\00:00:01\,FROM_PREVIOUS_START,
    THRM_SET_PT_SEL("JIRAM_DECON","OPERATIONAL")
),
command(3,
    SCHEDULED_TIME,\03:10:00\,FROM_PREVIOUS_START,
    THRM_SET_PT_SEL("JIRAM_ELECT_BE","OPERATIONAL")
),
    note(1,
        SCHEDULED_TIME,\00:00:04\,FROM_PREVIOUS_START,
        TEXT,\"NaN\"
    ),
end;

request(JRM_002,
    START_TIME,2022-228T20:07:30.000,
    TITLE, "jm0440_JRM-POWER_ON",
    REQUESTOR, "JRMTEAM",
    PROCESSOR, "VC2",
    KEY, "No_Key")
    spawn(1,
        SCHEDULED_TIME,\00:00:00\,FROM_REQUEST_START,
        REQ_ENGINE_ID,21,RT_on_board_block(jiram_pwr_on)
    ),
    note(1,
        SCHEDULED_TIME,\00:00:04\,FROM_PREVIOUS_START,
        TEXT,\"NaN\"
    ),
end;

request(JRM_003,
    START_TIME,2022-228T20:10:13.000,
    TITLE, "jm0440_JRM_StandBy",
    REQUESTOR, "JRMTEAM",
    PROCESSOR, "VC2",
    KEY, "No_Key")
    command(1,
        SCHEDULED_TIME,\00:00:00\,FROM_REQUEST_START,
        JRM_SET_PAR(111,2)
    ),
    command(2,
        SCHEDULED_TIME,\00:00:04\,FROM_PREVIOUS_START,
        JRM_STANDBY("ON","ON","OFF")
    ),
    command(3,
        SCHEDULED_TIME,\00:00:04\,FROM_PREVIOUS_START,

JRM_SCI_PAR("SCI_I2_S3",120,1,10,"IDIS_SDIS","HSSL","ENABLE","DARK","DISABLE",0,956,2,150,"LOW","LOW",
"POINT",-57343,2,150,"LOW","LOW","SPIN",0,"NO_SUMMED_SCI")
    ),
    note(1,
        SCHEDULED_TIME,\00:00:04\,FROM_PREVIOUS_START,
        TEXT,\"NaN\"
    ),
end;

request(JRM_004,
    START_TIME,2022-228T20:10:25.000,
    TITLE, "jm0440_JRM_Science",
    REQUESTOR, "JRMTEAM",
    PROCESSOR, "VC2",
    KEY, "No_Key")
    command(1,
        SCHEDULED_TIME,\00:00:00\,FROM_REQUEST_START,
        JRM_SET_PAR(74,2450)
    ),
    command(2,
        SCHEDULED_TIME,\00:00:02\,FROM_PREVIOUS_START,

JRM_SCI_PAR("SCI_I1_S1",10,1,0,"IDIS_SDIS","HSSL","ENABLE","DARK","DISABLE",0,427,100,5000,"LOW","LO
W","POINT",-57343,100,5000,"LOW","LOW","SPIN",-2848,"NO_SUMMED_SCI")
    ),
    command(3,

```

			JIR-IAPS-SY-002-2023	
			Issue	1.0
	JUNO/JIRAM		Page	13

```

        SCHEDULED_TIME,\00:00:02\,FROM_PREVIOUS_START,
        JRM_START_HS_REC()
    ),
    command(4,
        SCHEDULED_TIME,\00:00:02\,FROM_PREVIOUS_START,
        JRM_SCIENCE()
    ),
    command(5,
        SCHEDULED_TIME,\00:05:47\,FROM_PREVIOUS_START,
        JRM_ERROR_LOG()
    ),
    command(6,
        SCHEDULED_TIME,\00:00:02\,FROM_PREVIOUS_START,
        JRM_STOP_HS_REC()
    ),
    note(1,
        SCHEDULED_TIME,\00:00:04\,FROM_PREVIOUS_START,
        TEXT,\"Io\"
    ),
end;

request(JRM_005,
    START_TIME,2022-228T20:16:31.000,
    TITLE, "jm0440_JRM_Science",
    REQUESTOR, "JRMTEAM",
    PROCESSOR, "VC2",
    KEY, "No_Key")
    command(1,
        SCHEDULED_TIME,\00:00:00\,FROM_REQUEST_START,
        JRM_SET_PAR(74,2450)
    ),
    command(2,
        SCHEDULED_TIME,\00:00:02\,FROM_PREVIOUS_START,
        JRM_SCI_PAR("SCI_I1_S1",10,1,0,"IDIS_SDIS","HSSL","ENABLE","DARK","DISABLE",0,428,100,5000,"LOW","LOW",
        "POINT",-57343,100,5000,"LOW","LOW","SPIN",-2827,"NO_SUMMED_SCI")
    ),
    command(3,
        SCHEDULED_TIME,\00:00:02\,FROM_PREVIOUS_START,
        JRM_START_HS_REC()
    ),
    command(4,
        SCHEDULED_TIME,\00:00:02\,FROM_PREVIOUS_START,
        JRM_SCIENCE()
    ),
    command(5,
        SCHEDULED_TIME,\00:05:47\,FROM_PREVIOUS_START,
        JRM_ERROR_LOG()
    ),
    command(6,
        SCHEDULED_TIME,\00:00:02\,FROM_PREVIOUS_START,
        JRM_STOP_HS_REC()
    ),
    note(1,
        SCHEDULED_TIME,\00:00:04\,FROM_PREVIOUS_START,
        TEXT,\"Io\"
    ),
end;

request(JRM_006,
    START_TIME,2022-229T10:45:18.000,
    TITLE, "jm0440_JRM_Science",
    REQUESTOR, "JRMTEAM",
    PROCESSOR, "VC2",
    KEY, "No_Key")
    command(1,
        SCHEDULED_TIME,\00:00:00\,FROM_REQUEST_START,
        JRM_SET_PAR(74,2475)
    ),
    command(2,
        SCHEDULED_TIME,\00:00:02\,FROM_PREVIOUS_START,

```

			JIR-IAPS-SY-002-2023	
			Issue	1.0
	JUNO/JIRAM		Page	14

```

JRM_SCI_PAR("SCI_I2_S1",30,1,0,"IDIS_SDIS","HSSL","ENABLE","DARK","DISABLE",0,347,50,5000,"LOW","LOW",
,"POINT",-57343,50,5000,"LOW","LOW","SPIN",-4959,"NO_SUMMED_SCI")
),
command(3,
SCHEDULED_TIME,\00:00:02\,FROM_PREVIOUS_START,
JRM_START_HS_REC()
),
command(4,
SCHEDULED_TIME,\00:00:02\,FROM_PREVIOUS_START,
JRM_SCIENCE()
),
command(5,
SCHEDULED_TIME,\00:15:57\,FROM_PREVIOUS_START,
JRM_ERROR_LOG()
),
command(6,
SCHEDULED_TIME,\00:00:02\,FROM_PREVIOUS_START,
JRM_STOP_HS_REC()
),
note(1,
SCHEDULED_TIME,\00:00:04\,FROM_PREVIOUS_START,
TEXT,\"Atmosphere\"
),
end;

request(JRM_007,
START_TIME,2022-229T11:01:34.000,
TITLE, "jm0440_JRM_Science",
REQUESTOR, "JRMTEAM",
PROCESSOR, "VC2",
KEY, "No_Key")
command(1,
SCHEDULED_TIME,\00:00:00\,FROM_REQUEST_START,
JRM_SET_PAR(74,2475)
),
command(2,
SCHEDULED_TIME,\00:00:02\,FROM_PREVIOUS_START,

JRM_SCI_PAR("SCI_I2_S1",28,1,0,"IDIS_SDIS","HSSL","ENABLE","DARK","DISABLE",0,385,50,5000,"LOW","LOW",
,"POINT",-57343,50,5000,"LOW","LOW","SPIN",-5108,"NO_SUMMED_SCI")
),
command(3,
SCHEDULED_TIME,\00:00:02\,FROM_PREVIOUS_START,
JRM_START_HS_REC()
),
command(4,
SCHEDULED_TIME,\00:00:02\,FROM_PREVIOUS_START,
JRM_SCIENCE()
),
command(5,
SCHEDULED_TIME,\00:14:57\,FROM_PREVIOUS_START,
JRM_ERROR_LOG()
),
command(6,
SCHEDULED_TIME,\00:00:02\,FROM_PREVIOUS_START,
JRM_STOP_HS_REC()
),
note(1,
SCHEDULED_TIME,\00:00:04\,FROM_PREVIOUS_START,
TEXT,\"Atmosphere\"
),
end;

request(JRM_008,
START_TIME,2022-229T11:16:49.000,
TITLE, "jm0440_JRM_Science",
REQUESTOR, "JRMTEAM",
PROCESSOR, "VC2",
KEY, "No_Key")
command(1,
SCHEDULED_TIME,\00:00:00\,FROM_REQUEST_START,
JRM_SET_PAR(74,2475)

```

			JIR-IAPS-SY-002-2023	
			Issue	1.0
	JUNO/JIRAM		Page	15

```

),
command(2,
    SCHEDULED_TIME,\00:00:02\,FROM_PREVIOUS_START,
JRM_SCI_PAR("SCI_I2_S1",28,1,0,"IDIS_SDIS","HSSL","ENABLE","DARK","DISABLE",0,397,50,5000,"LOW","LOW",
",POINT",-57343,50,5000,"LOW","LOW","SPIN",-5278,"NO_SUMMED_SCI")
),
command(3,
    SCHEDULED_TIME,\00:00:02\,FROM_PREVIOUS_START,
    JRM_START_HS_REC()
),
command(4,
    SCHEDULED_TIME,\00:00:02\,FROM_PREVIOUS_START,
    JRM_SCIENCE()
),
command(5,
    SCHEDULED_TIME,\00:14:57\,FROM_PREVIOUS_START,
    JRM_ERROR_LOG()
),
command(6,
    SCHEDULED_TIME,\00:00:02\,FROM_PREVIOUS_START,
    JRM_STOP_HS_REC()
),
note(1,
    SCHEDULED_TIME,\00:00:04\,FROM_PREVIOUS_START,
    TEXT,\"Atmosphere\"
),
end;

request(JRM_009,
    START_TIME,2022-229T11:32:04.000,
    TITLE, "jm0440_JRM_Science",
    REQUESTOR, "JRMTEAM",
    PROCESSOR, "VC2",
    KEY, "No_Key")
command(1,
    SCHEDULED_TIME,\00:00:00\,FROM_REQUEST_START,
    JRM_SET_PAR(74,2475)
),
command(2,
    SCHEDULED_TIME,\00:00:02\,FROM_PREVIOUS_START,
JRM_SCI_PAR("SCI_I2_S1",26,1,0,"IDIS_SDIS","HSSL","ENABLE","DARK","DISABLE",0,446,50,5000,"LOW","LOW",
",POINT",-57343,50,5000,"LOW","LOW","SPIN",-5474,"NO_SUMMED_SCI")
),
command(3,
    SCHEDULED_TIME,\00:00:02\,FROM_PREVIOUS_START,
    JRM_START_HS_REC()
),
command(4,
    SCHEDULED_TIME,\00:00:02\,FROM_PREVIOUS_START,
    JRM_SCIENCE()
),
command(5,
    SCHEDULED_TIME,\00:13:56\,FROM_PREVIOUS_START,
    JRM_ERROR_LOG()
),
command(6,
    SCHEDULED_TIME,\00:00:02\,FROM_PREVIOUS_START,
    JRM_STOP_HS_REC()
),
note(1,
    SCHEDULED_TIME,\00:00:04\,FROM_PREVIOUS_START,
    TEXT,\"Atmosphere\"
),
end;

request(JRM_010,
    START_TIME,2022-229T11:46:18.000,
    TITLE, "jm0440_JRM_Science",
    REQUESTOR, "JRMTEAM",
    PROCESSOR, "VC2",
    KEY, "No_Key")

```

			JIR-IAPS-SY-002-2023	
			Issue	1.0
	JUNO/JIRAM		Page	16

```

command(1,
    SCHEDULED_TIME,\00:00:00\,FROM_REQUEST_START,
    JRM_SET_PAR(74,2475)
),
command(2,
    SCHEDULED_TIME,\00:00:02\,FROM_PREVIOUS_START,
JRM_SCI_PAR("SCI_I2_S1",15,1,0,"IDIS_SDIS","HSSL","ENABLE","DARK","DISABLE",0,298,50,5000,"LOW","LOW",
",POINT",-57343,50,5000,"LOW","LOW","SPIN",-4004,"NO_SUMMED_SCI")
),
command(3,
    SCHEDULED_TIME,\00:00:02\,FROM_PREVIOUS_START,
    JRM_START_HS_REC()
),
command(4,
    SCHEDULED_TIME,\00:00:02\,FROM_PREVIOUS_START,
    JRM_SCIENCE()
),
command(5,
    SCHEDULED_TIME,\00:08:19\,FROM_PREVIOUS_START,
    JRM_ERROR_LOG()
),
command(6,
    SCHEDULED_TIME,\00:00:02\,FROM_PREVIOUS_START,
    JRM_STOP_HS_REC()
),
note(1,
    SCHEDULED_TIME,\00:00:04\,FROM_PREVIOUS_START,
    TEXT,\"Limb Down\"
),
end;

request(JRM_011,
    START_TIME,2022-229T11:54:57.000,
    TITLE, "jm0440_JRM_Science",
    REQUESTOR, "JRMTEAM",
    PROCESSOR, "VC2",
    KEY, "No_Key")

command(1,
    SCHEDULED_TIME,\00:00:00\,FROM_REQUEST_START,
    JRM_SET_PAR(74,2475)
),
command(2,
    SCHEDULED_TIME,\00:00:02\,FROM_PREVIOUS_START,
JRM_SCI_PAR("SCI_I2_S1",13,1,0,"IDIS_SDIS","HSSL","ENABLE","DARK","DISABLE",0,349,50,5000,"LOW","LOW",
",POINT",-57343,50,5000,"LOW","LOW","SPIN",-4308,"NO_SUMMED_SCI")
),
command(3,
    SCHEDULED_TIME,\00:00:02\,FROM_PREVIOUS_START,
    JRM_START_HS_REC()
),
command(4,
    SCHEDULED_TIME,\00:00:02\,FROM_PREVIOUS_START,
    JRM_SCIENCE()
),
command(5,
    SCHEDULED_TIME,\00:07:18\,FROM_PREVIOUS_START,
    JRM_ERROR_LOG()
),
command(6,
    SCHEDULED_TIME,\00:00:02\,FROM_PREVIOUS_START,
    JRM_STOP_HS_REC()
),
note(1,
    SCHEDULED_TIME,\00:00:04\,FROM_PREVIOUS_START,
    TEXT,\"Limb Down\"
),
end;

request(JRM_012,
    START_TIME,2022-229T12:02:35.000,
    TITLE, "jm0440_JRM_Science",

```


			JIR-IAPS-SY-002-2023	
			Issue	1.0
	JUNO/JIRAM		Page	17

```

REQUESTOR, "JRMTEAM",
PROCESSOR, "VC2",
KEY, "No_Key")
command(1,
  SCHEDULED_TIME,\00:00:00\,FROM_REQUEST_START,
  JRM_SET_PAR(74,2475)
),
command(2,
  SCHEDULED_TIME,\00:00:02\,FROM_PREVIOUS_START,

JRM_SCI_PAR("SCI_I2_S1",13,1,0,"IDIS_SDIS","HSSL","ENABLE","DARK","DISABLE",0,349,50,5000,"LOW","LOW",
", "POINT",-57343,50,5000,"LOW","LOW","SPIN",-4596,"NO_SUMMED_SCI")
),
command(3,
  SCHEDULED_TIME,\00:00:02\,FROM_PREVIOUS_START,
  JRM_START_HS_REC()
),
command(4,
  SCHEDULED_TIME,\00:00:02\,FROM_PREVIOUS_START,
  JRM_SCIENCE()
),
command(5,
  SCHEDULED_TIME,\00:07:18\,FROM_PREVIOUS_START,
  JRM_ERROR_LOG()
),
command(6,
  SCHEDULED_TIME,\00:00:02\,FROM_PREVIOUS_START,
  JRM_STOP_HS_REC()
),
note(1,
  SCHEDULED_TIME,\00:00:04\,FROM_PREVIOUS_START,
  TEXT,\"Limb Down\"\\
),
end;

request(JRM_013,
  START_TIME,2022-229T12:10:12.000,
  TITLE, "jm0440_JRM_Science",
  REQUESTOR, "JRMTEAM",
  PROCESSOR, "VC2",
  KEY, "No_Key")
command(1,
  SCHEDULED_TIME,\00:00:00\,FROM_REQUEST_START,
  JRM_SET_PAR(74,2475)
),
command(2,
  SCHEDULED_TIME,\00:00:02\,FROM_PREVIOUS_START,

JRM_SCI_PAR("SCI_I2_S1",13,1,0,"IDIS_SDIS","HSSL","ENABLE","DARK","DISABLE",0,349,50,5000,"LOW","LOW",
", "POINT",-57343,50,5000,"LOW","LOW","SPIN",-4885,"NO_SUMMED_SCI")
),
command(3,
  SCHEDULED_TIME,\00:00:02\,FROM_PREVIOUS_START,
  JRM_START_HS_REC()
),
command(4,
  SCHEDULED_TIME,\00:00:02\,FROM_PREVIOUS_START,
  JRM_SCIENCE()
),
command(5,
  SCHEDULED_TIME,\00:07:18\,FROM_PREVIOUS_START,
  JRM_ERROR_LOG()
),
command(6,
  SCHEDULED_TIME,\00:00:02\,FROM_PREVIOUS_START,
  JRM_STOP_HS_REC()
),
note(1,
  SCHEDULED_TIME,\00:00:04\,FROM_PREVIOUS_START,
  TEXT,\"Limb Down\"\\
),
end;

```

			JIR-IAPS-SY-002-2023	
			Issue	1.0
	JUNO/JIRAM		Page	18

```

request (JRM_014,
    START_TIME,2022-229T12:17:50.000,
    TITLE, "jm0440_JRM_Science",
    REQUESTOR, "JRMTEAM",
    PROCESSOR, "VC2",
    KEY, "No_Key")
    command(1,
        SCHEDULED_TIME,\00:00:00\,FROM_REQUEST_START,
        JRM_SET_PAR(74,2475)
    ),
    command(2,
        SCHEDULED_TIME,\00:00:02\,FROM_PREVIOUS_START,

JRM_SCI_PAR("SCI_I2_S1",11,1,0,"IDIS_SDIS","HSSL","ENABLE","DARK","DISABLE",0,422,50,5000,"LOW","LOW",
", "POINT",-57343,50,5000,"LOW","LOW","SPIN",-5175,"NO_SUMMED_SCI")
    ),
    command(3,
        SCHEDULED_TIME,\00:00:02\,FROM_PREVIOUS_START,
        JRM_START_HS_REC()
    ),
    command(4,
        SCHEDULED_TIME,\00:00:02\,FROM_PREVIOUS_START,
        JRM_SCIENCE()
    ),
    command(5,
        SCHEDULED_TIME,\00:06:17\,FROM_PREVIOUS_START,
        JRM_ERROR_LOG()
    ),
    command(6,
        SCHEDULED_TIME,\00:00:02\,FROM_PREVIOUS_START,
        JRM_STOP_HS_REC()
    ),
    note(1,
        SCHEDULED_TIME,\00:00:04\,FROM_PREVIOUS_START,
        TEXT,\ "Limb Down"\
    ),
end;

request (JRM_015,
    START_TIME,2022-229T12:24:26.000,
    TITLE, "jm0440_JRM_Science",
    REQUESTOR, "JRMTEAM",
    PROCESSOR, "VC2",
    KEY, "No_Key")
    command(1,
        SCHEDULED_TIME,\00:00:00\,FROM_REQUEST_START,
        JRM_SET_PAR(74,0)
    ),
    command(2,
        SCHEDULED_TIME,\00:00:02\,FROM_PREVIOUS_START,

JRM_SCI_PAR("SCI_I2_S1",20,1,0,"IDIS_SDIS","HSSL","ENABLE","DARK","DISABLE",0,301,50,50,"LOW","LOW",
"POINT",-57343,50,50,"LOW","LOW","SPIN",-6537,"NO_SUMMED_SCI")
    ),
    command(3,
        SCHEDULED_TIME,\00:00:02\,FROM_PREVIOUS_START,
        JRM_START_HS_REC()
    ),
    command(4,
        SCHEDULED_TIME,\00:00:02\,FROM_PREVIOUS_START,
        JRM_SCIENCE()
    ),
    command(5,
        SCHEDULED_TIME,\00:10:52\,FROM_PREVIOUS_START,
        JRM_ERROR_LOG()
    ),
    command(6,
        SCHEDULED_TIME,\00:00:02\,FROM_PREVIOUS_START,
        JRM_STOP_HS_REC()
    ),
    note(1,
        SCHEDULED_TIME,\00:00:04\,FROM_PREVIOUS_START,
        TEXT,\ "North Pole"\
    )

```

			JIR-IAPS-SY-002-2023	
			Issue	1.0
	JUNO/JIRAM		Page	19

```

),
end;

request (JRM_016,
        START_TIME,2022-229T12:35:37.000,
        TITLE, "jm0440_JRM_Science",
        REQUESTOR, "JRMTEAM",
        PROCESSOR, "VC2",
        KEY, "No_Key")
    command(1,
            SCHEDULED_TIME,\00:00:00\,FROM_REQUEST_START,
            JRM_SET_PAR(74,0)
        ),
    command(2,
            SCHEDULED_TIME,\00:00:02\,FROM_PREVIOUS_START,
            JRM_SCI_PAR("SCI_I2_S1",18,1,0,"IDIS_SDIS","HSSL","ENABLE","DARK","DISABLE",0,336,50,50,"LOW","LOW",
            "POINT",-57343,50,50,"LOW","LOW","SPIN",-6791,"NO_SUMMED_SCI")
        ),
    command(3,
            SCHEDULED_TIME,\00:00:02\,FROM_PREVIOUS_START,
            JRM_START_HS_REC()
        ),
    command(4,
            SCHEDULED_TIME,\00:00:02\,FROM_PREVIOUS_START,
            JRM_SCIENCE()
        ),
    command(5,
            SCHEDULED_TIME,\00:09:51\,FROM_PREVIOUS_START,
            JRM_ERROR_LOG()
        ),
    command(6,
            SCHEDULED_TIME,\00:00:02\,FROM_PREVIOUS_START,
            JRM_STOP_HS_REC()
        ),
    note(1,
            SCHEDULED_TIME,\00:00:04\,FROM_PREVIOUS_START,
            TEXT,\"North Pole\"
        ),
end;

request (JRM_017,
        START_TIME,2022-229T12:45:48.000,
        TITLE, "jm0440_JRM_Science",
        REQUESTOR, "JRMTEAM",
        PROCESSOR, "VC2",
        KEY, "No_Key")
    command(1,
            SCHEDULED_TIME,\00:00:00\,FROM_REQUEST_START,
            JRM_SET_PAR(74,0)
        ),
    command(2,
            SCHEDULED_TIME,\00:00:02\,FROM_PREVIOUS_START,
            JRM_SCI_PAR("SCI_I2_S1",18,1,0,"IDIS_SDIS","HSSL","ENABLE","DARK","DISABLE",0,336,50,50,"LOW","LOW",
            "POINT",-57343,50,50,"LOW","LOW","SPIN",-7077,"NO_SUMMED_SCI")
        ),
    command(3,
            SCHEDULED_TIME,\00:00:02\,FROM_PREVIOUS_START,
            JRM_START_HS_REC()
        ),
    command(4,
            SCHEDULED_TIME,\00:00:02\,FROM_PREVIOUS_START,
            JRM_SCIENCE()
        ),
    command(5,
            SCHEDULED_TIME,\00:09:50\,FROM_PREVIOUS_START,
            JRM_ERROR_LOG()
        ),
    command(6,
            SCHEDULED_TIME,\00:00:02\,FROM_PREVIOUS_START,
            JRM_STOP_HS_REC()
        ),
),

```

			JIR-IAPS-SY-002-2023	
			Issue	1.0
	JUNO/JIRAM		Page	20

```

        note(1,
            SCHEDULED_TIME,\00:00:04\,FROM_PREVIOUS_START,
            TEXT,\"North Pole\"
        ),
end;

request(JRM_018,
    START_TIME,2022-229T12:55:58.000,
    TITLE, "jm0440_JRM_Science",
    REQUESTOR, "JRMTEAM",
    PROCESSOR, "VC2",
    KEY, "No_Key")
    command(1,
        SCHEDULED_TIME,\00:00:00\,FROM_REQUEST_START,
        JRM_SET_PAR(74,0)
    ),
    command(2,
        SCHEDULED_TIME,\00:00:02\,FROM_PREVIOUS_START,
JRM_SCI_PAR("SCI_I2_S1",18,1,0,"IDIS_SDIS","HSSL","ENABLE","DARK","DISABLE",0,336,50,50,"LOW","LOW",
"POINT",-57343,50,50,"LOW","LOW","SPIN",-7406,"NO_SUMMED_SCI")
    ),
    command(3,
        SCHEDULED_TIME,\00:00:02\,FROM_PREVIOUS_START,
        JRM_START_HS_REC()
    ),
    command(4,
        SCHEDULED_TIME,\00:00:02\,FROM_PREVIOUS_START,
        JRM_SCIENCE()
    ),
    command(5,
        SCHEDULED_TIME,\00:09:51\,FROM_PREVIOUS_START,
        JRM_ERROR_LOG()
    ),
    command(6,
        SCHEDULED_TIME,\00:00:02\,FROM_PREVIOUS_START,
        JRM_STOP_HS_REC()
    ),
    note(1,
        SCHEDULED_TIME,\00:00:04\,FROM_PREVIOUS_START,
        TEXT,\"North Pole\"
    ),
end;

request(JRM_019,
    START_TIME,2022-229T13:06:08.000,
    TITLE, "jm0440_JRM_Science",
    REQUESTOR, "JRMTEAM",
    PROCESSOR, "VC2",
    KEY, "No_Key")
    command(1,
        SCHEDULED_TIME,\00:00:00\,FROM_REQUEST_START,
        JRM_SET_PAR(74,0)
    ),
    command(2,
        SCHEDULED_TIME,\00:00:02\,FROM_PREVIOUS_START,
JRM_SCI_PAR("SCI_I2_S1",18,1,0,"IDIS_SDIS","HSSL","ENABLE","DARK","DISABLE",0,336,50,50,"LOW","LOW",
"POINT",-57343,50,50,"LOW","LOW","SPIN",-7780,"NO_SUMMED_SCI")
    ),
    command(3,
        SCHEDULED_TIME,\00:00:02\,FROM_PREVIOUS_START,
        JRM_START_HS_REC()
    ),
    command(4,
        SCHEDULED_TIME,\00:00:02\,FROM_PREVIOUS_START,
        JRM_SCIENCE()
    ),
    command(5,
        SCHEDULED_TIME,\00:09:51\,FROM_PREVIOUS_START,
        JRM_ERROR_LOG()
    ),
    command(6,

```

			JIR-IAPS-SY-002-2023	
			Issue	1.0
	JUNO/JIRAM		Page	21

```

        SCHEDULED_TIME,\00:00:02\,FROM_PREVIOUS_START,
        JRM_STOP_HS_REC()
    ),
    note(1,
        SCHEDULED_TIME,\00:00:04\,FROM_PREVIOUS_START,
        TEXT,\"North Pole\"
    ),
end;

request(JRM_020,
    START_TIME,2022-229T13:16:18.000,
    TITLE, "jm0440_JRM_Science",
    REQUESTOR, "JRMTEAM",
    PROCESSOR, "VC2",
    KEY, "No_Key")
command(1,
    SCHEDULED_TIME,\00:00:00\,FROM_REQUEST_START,
    JRM_SET_PAR(74,0)
),
command(2,
    SCHEDULED_TIME,\00:00:02\,FROM_PREVIOUS_START,
    JRM_SCI_PAR("SCI_I2_S1",18,1,0,"IDIS_SDIS","HSSL","ENABLE","DARK","DISABLE",0,337,50,50,"LOW","LOW",
    "POINT",-57343,50,50,"LOW","LOW","SPIN",-8218,"NO_SUMMED_SCI")
),
command(3,
    SCHEDULED_TIME,\00:00:02\,FROM_PREVIOUS_START,
    JRM_START_HS_REC()
),
command(4,
    SCHEDULED_TIME,\00:00:02\,FROM_PREVIOUS_START,
    JRM_SCIENCE()
),
command(5,
    SCHEDULED_TIME,\00:09:51\,FROM_PREVIOUS_START,
    JRM_ERROR_LOG()
),
command(6,
    SCHEDULED_TIME,\00:00:02\,FROM_PREVIOUS_START,
    JRM_STOP_HS_REC()
),
    note(1,
        SCHEDULED_TIME,\00:00:04\,FROM_PREVIOUS_START,
        TEXT,\"North Pole\"
    ),
end;

request(JRM_021,
    START_TIME,2022-229T13:26:29.000,
    TITLE, "jm0440_JRM_Science",
    REQUESTOR, "JRMTEAM",
    PROCESSOR, "VC2",
    KEY, "No_Key")
command(1,
    SCHEDULED_TIME,\00:00:00\,FROM_REQUEST_START,
    JRM_SET_PAR(74,0)
),
command(2,
    SCHEDULED_TIME,\00:00:02\,FROM_PREVIOUS_START,
    JRM_SCI_PAR("SCI_I2_S1",18,1,0,"IDIS_SDIS","HSSL","ENABLE","DARK","DISABLE",0,336,50,50,"LOW","LOW",
    "POINT",-57343,50,50,"LOW","LOW","SPIN",-8708,"NO_SUMMED_SCI")
),
command(3,
    SCHEDULED_TIME,\00:00:02\,FROM_PREVIOUS_START,
    JRM_START_HS_REC()
),
command(4,
    SCHEDULED_TIME,\00:00:02\,FROM_PREVIOUS_START,
    JRM_SCIENCE()
),
command(5,
    SCHEDULED_TIME,\00:09:51\,FROM_PREVIOUS_START,

```

			JIR-IAPS-SY-002-2023	
			Issue	1.0
	JUNO/JIRAM		Page	22

```

        JRM_ERROR_LOG()
    ),
    command(6,
        SCHEDULED_TIME,\00:00:02\,FROM_PREVIOUS_START,
        JRM_STOP_HS_REC()
    ),
    note(1,
        SCHEDULED_TIME,\00:00:04\,FROM_PREVIOUS_START,
        TEXT,\"North Pole\"
    ),
end;

request(JRM_022,
    START_TIME,2022-229T13:36:39.000,
    TITLE, "jm0440_JRM_Science",
    REQUESTOR, "JRMTEAM",
    PROCESSOR, "VC2",
    KEY, "No_Key")
    command(1,
        SCHEDULED_TIME,\00:00:00\,FROM_REQUEST_START,
        JRM_SET_PAR(74,0)
    ),
    command(2,
        SCHEDULED_TIME,\00:00:02\,FROM_PREVIOUS_START,
        JRM_SCI_PAR("SCI_I2_S1",18,1,0,"IDIS_SDIS","HSSL","ENABLE","DARK","DISABLE",0,336,50,50,"LOW","LOW",
        "POINT",-57343,50,50,"LOW","LOW","SPIN",-9269,"NO_SUMMED_SCI")
    ),
    command(3,
        SCHEDULED_TIME,\00:00:02\,FROM_PREVIOUS_START,
        JRM_START_HS_REC()
    ),
    command(4,
        SCHEDULED_TIME,\00:00:02\,FROM_PREVIOUS_START,
        JRM_SCIENCE()
    ),
    command(5,
        SCHEDULED_TIME,\00:09:51\,FROM_PREVIOUS_START,
        JRM_ERROR_LOG()
    ),
    command(6,
        SCHEDULED_TIME,\00:00:02\,FROM_PREVIOUS_START,
        JRM_STOP_HS_REC()
    ),
    note(1,
        SCHEDULED_TIME,\00:00:04\,FROM_PREVIOUS_START,
        TEXT,\"North Pole\"
    ),
end;

request(JRM_023,
    START_TIME,2022-229T13:46:50.000,
    TITLE, "jm0440_JRM_Science",
    REQUESTOR, "JRMTEAM",
    PROCESSOR, "VC2",
    KEY, "No_Key")
    command(1,
        SCHEDULED_TIME,\00:00:00\,FROM_REQUEST_START,
        JRM_SET_PAR(74,0)
    ),
    command(2,
        SCHEDULED_TIME,\00:00:02\,FROM_PREVIOUS_START,
        JRM_SCI_PAR("SCI_I1_S1",20,1,0,"IDIS_SDIS","HSSL","ENABLE","DARK","DISABLE",0,418,50,50,"LOW","LOW",
        "POINT",-57343,50,50,"LOW","LOW","SPIN",-11198,"NO_SUMMED_SCI")
    ),
    command(3,
        SCHEDULED_TIME,\00:00:02\,FROM_PREVIOUS_START,
        JRM_START_HS_REC()
    ),
    command(4,
        SCHEDULED_TIME,\00:00:02\,FROM_PREVIOUS_START,
        JRM_SCIENCE()
    )

```

			JIR-IAPS-SY-002-2023	
			Issue	1.0
	JUNO/JIRAM		Page	23

```

),
command(5,
  SCHEDULED_TIME,\00:10:53\,FROM_PREVIOUS_START,
  JRM_ERROR_LOG()
),
command(6,
  SCHEDULED_TIME,\00:00:02\,FROM_PREVIOUS_START,
  JRM_STOP_HS_REC()
),
note(1,
  SCHEDULED_TIME,\00:00:04\,FROM_PREVIOUS_START,
  TEXT,\"North Pole\"
),
end;

request(JRM_024,
  START_TIME,2022-229T13:58:01.000,
  TITLE, "jm0440_JRM_Science",
  REQUESTOR, "JRMTEAM",
  PROCESSOR, "VC2",
  KEY, "No_Key")
command(1,
  SCHEDULED_TIME,\00:00:00\,FROM_REQUEST_START,
  JRM_SET_PAR(74,0)
),
command(2,
  SCHEDULED_TIME,\00:00:02\,FROM_PREVIOUS_START,
  JRM_SCI_PAR("SCI_I1_S1",18,1,0,"IDIS_SDIS","HSSL","ENABLE","DARK","DISABLE",0,470,50,50,"LOW","LOW",
"POINT",-57343,50,50,"LOW","LOW","SPIN",-11655,"NO_SUMMED_SCI")
),
command(3,
  SCHEDULED_TIME,\00:00:02\,FROM_PREVIOUS_START,
  JRM_START_HS_REC()
),
command(4,
  SCHEDULED_TIME,\00:00:02\,FROM_PREVIOUS_START,
  JRM_SCIENCE()
),
command(5,
  SCHEDULED_TIME,\00:09:53\,FROM_PREVIOUS_START,
  JRM_ERROR_LOG()
),
command(6,
  SCHEDULED_TIME,\00:00:02\,FROM_PREVIOUS_START,
  JRM_STOP_HS_REC()
),
note(1,
  SCHEDULED_TIME,\00:00:04\,FROM_PREVIOUS_START,
  TEXT,\"North Pole\"
),
end;

request(JRM_025,
  START_TIME,2022-229T14:08:12.000,
  TITLE, "jm0440_JRM_Science",
  REQUESTOR, "JRMTEAM",
  PROCESSOR, "VC2",
  KEY, "No_Key")
command(1,
  SCHEDULED_TIME,\00:00:00\,FROM_REQUEST_START,
  JRM_SET_PAR(74,0)
),
command(2,
  SCHEDULED_TIME,\00:00:02\,FROM_PREVIOUS_START,
  JRM_SCI_PAR("SCI_I1_S1",18,1,0,"IDIS_SDIS","HSSL","ENABLE","DARK","DISABLE",0,591,50,50,"LOW","LOW",
"POINT",-57343,50,50,"LOW","LOW","SPIN",-11958,"NO_SUMMED_SCI")
),
command(3,
  SCHEDULED_TIME,\00:00:02\,FROM_PREVIOUS_START,
  JRM_START_HS_REC()
),

```

			JIR-IAPS-SY-002-2023	
			Issue	1.0
	JUNO/JIRAM		Page	24

```

command(4,
    SCHEDULED_TIME,\00:00:02\,FROM_PREVIOUS_START,
    JRM_SCIENCE()
),
command(5,
    SCHEDULED_TIME,\00:09:53\,FROM_PREVIOUS_START,
    JRM_ERROR_LOG()
),
command(6,
    SCHEDULED_TIME,\00:00:02\,FROM_PREVIOUS_START,
    JRM_STOP_HS_REC()
),
note(1,
    SCHEDULED_TIME,\00:00:04\,FROM_PREVIOUS_START,
    TEXT,\"North Pole\"
),
end;

request(JRM_026,
    START_TIME,2022-229T14:18:23.000,
    TITLE, "jm0440_JRM_Science",
    REQUESTOR, "JRMTEAM",
    PROCESSOR, "VC2",
    KEY, "No_Key")
command(1,
    SCHEDULED_TIME,\00:00:00\,FROM_REQUEST_START,
    JRM_SET_PAR(74,0)
),
command(2,
    SCHEDULED_TIME,\00:00:02\,FROM_PREVIOUS_START,
    JRM_SCI_PAR("SCI_I1_S1",18,1,0,"IDIS_SDIS","HSSL","ENABLE","DARK","DISABLE",0,1430,50,50,"LOW","LOW",
    ,"POINT",-57343,50,50,"LOW","LOW","SPIN",-10782,"NO_SUMMED_SCI")
),
command(3,
    SCHEDULED_TIME,\00:00:02\,FROM_PREVIOUS_START,
    JRM_START_HS_REC()
),
command(4,
    SCHEDULED_TIME,\00:00:02\,FROM_PREVIOUS_START,
    JRM_SCIENCE()
),
command(5,
    SCHEDULED_TIME,\00:09:57\,FROM_PREVIOUS_START,
    JRM_ERROR_LOG()
),
command(6,
    SCHEDULED_TIME,\00:00:02\,FROM_PREVIOUS_START,
    JRM_STOP_HS_REC()
),
note(1,
    SCHEDULED_TIME,\00:00:04\,FROM_PREVIOUS_START,
    TEXT,\"North Pole\"
),
end;

request(JRM_027,
    START_TIME,2022-229T14:28:35.000,
    TITLE, "jm0440_JRM_Science",
    REQUESTOR, "JRMTEAM",
    PROCESSOR, "VC2",
    KEY, "No_Key")
command(1,
    SCHEDULED_TIME,\00:00:00\,FROM_REQUEST_START,
    JRM_SET_PAR(74,2475)
),
command(2,
    SCHEDULED_TIME,\00:00:02\,FROM_PREVIOUS_START,
    JRM_SCI_PAR("SCI_I2_S1",15,1,0,"IDIS_SDIS","HSSL","ENABLE","DARK","DISABLE",0,467,50,5000,"LOW","LOW",
    ,"POINT",-57343,50,5000,"LOW","LOW","SPIN",15253,"NO_SUMMED_SCI")
),
command(3,

```


			JIR-IAPS-SY-002-2023	
			Issue	1.0
	JUNO/JIRAM		Page	25

```

        SCHEDULED_TIME,\00:00:02\,FROM_PREVIOUS_START,
        JRM_START_HS_REC()
    ),
    command(4,
        SCHEDULED_TIME,\00:00:02\,FROM_PREVIOUS_START,
        JRM_SCIENCE()
    ),
    command(5,
        SCHEDULED_TIME,\00:08:20\,FROM_PREVIOUS_START,
        JRM_ERROR_LOG()
    ),
    command(6,
        SCHEDULED_TIME,\00:00:02\,FROM_PREVIOUS_START,
        JRM_STOP_HS_REC()
    ),
    note(1,
        SCHEDULED_TIME,\00:00:04\,FROM_PREVIOUS_START,
        TEXT,\"Limb Up\"
    ),
end;

request(JRM_028,
    START_TIME,2022-229T14:37:15.000,
    TITLE, "jm0440_JRM_Science",
    REQUESTOR, "JRMTEAM",
    PROCESSOR, "VC2",
    KEY, "No_Key")
    command(1,
        SCHEDULED_TIME,\00:00:00\,FROM_REQUEST_START,
        JRM_SET_PAR(74,2475)
    ),
    command(2,
        SCHEDULED_TIME,\00:00:02\,FROM_PREVIOUS_START,
        JRM_SCI_PAR("SCI_I2_S1",13,1,0,"IDIS_SDIS","HSSL","ENABLE","DARK","DISABLE",0,533,50,5000,"LOW","LOW",
        ",POINT",-57343,50,5000,"LOW","LOW","SPIN",17541,"NO_SUMMED_SCI")
    ),
    command(3,
        SCHEDULED_TIME,\00:00:02\,FROM_PREVIOUS_START,
        JRM_START_HS_REC()
    ),
    command(4,
        SCHEDULED_TIME,\00:00:02\,FROM_PREVIOUS_START,
        JRM_SCIENCE()
    ),
    command(5,
        SCHEDULED_TIME,\00:07:19\,FROM_PREVIOUS_START,
        JRM_ERROR_LOG()
    ),
    command(6,
        SCHEDULED_TIME,\00:00:02\,FROM_PREVIOUS_START,
        JRM_STOP_HS_REC()
    ),
    note(1,
        SCHEDULED_TIME,\00:00:04\,FROM_PREVIOUS_START,
        TEXT,\"Limb Up\"
    ),
end;

request(JRM_029,
    START_TIME,2022-229T14:44:46.000,
    TITLE, "jm0440_JRM-POWER_OFF",
    REQUESTOR, "JRMTEAM",
    PROCESSOR, "VC2",
    KEY, "No_Key")
    command(1,
        SCHEDULED_TIME,\00:00:00\,FROM_REQUEST_START,
        VM_LOAD(21,"d:/seq/hlfp_spm_safe_jiram.mod")
    ),
    note(1,
        SCHEDULED_TIME,\00:00:04\,FROM_PREVIOUS_START,
        TEXT,\"NaN\"
    ),

```

			JIR-IAPS-SY-002-2023	
			Issue	1.0
	JUNO/JIRAM		Page	26

```

end;

request (JRM_030,
        START_TIME,2022-229T14:46:46.000,
        TITLE, "jm0440_JRM-POWER_ON",
        REQUESTOR, "JRMTEAM",
        PROCESSOR, "VC2",
        KEY, "No_Key")
    spawn (1,
           SCHEDULED_TIME,\00:00:00\,FROM_REQUEST_START,
           REQ_ENGINE_ID,21,RT_on_board_block(jiram_pwr_on)
        ),
    note (1,
         SCHEDULED_TIME,\00:00:04\,FROM_PREVIOUS_START,
         TEXT,\NaN\
    ),
end;

request (JRM_031,
        START_TIME,2022-229T14:49:29.000,
        TITLE, "jm0440_JRM_StandBy",
        REQUESTOR, "JRMTEAM",
        PROCESSOR, "VC2",
        KEY, "No_Key")
    command (1,
            SCHEDULED_TIME,\00:00:00\,FROM_REQUEST_START,
            JRM_SET_PAR(111,10)
        ),
    command (2,
            SCHEDULED_TIME,\00:00:04\,FROM_PREVIOUS_START,
            JRM_STANDBY("ON","ON","OFF")
        ),
    command (3,
            SCHEDULED_TIME,\00:00:04\,FROM_PREVIOUS_START,
            JRM_SCI_PAR("SCI_I1_S3",120,1,10,"IDIS_SDIS","HSSL","ENABLE","DARK","DISABLE",0,956,2,150,"LOW","LOW",
            "POINT",-57343,2,150,"LOW","LOW","SPIN",0,"NO_SUMMED_SCI")
        ),
    note (1,
         SCHEDULED_TIME,\00:00:04\,FROM_PREVIOUS_START,
         TEXT,\NaN\
    ),
end;

request (JRM_032,
        START_TIME,2022-229T15:03:47.000,
        TITLE, "jm0440_JRM_Science",
        REQUESTOR, "JRMTEAM",
        PROCESSOR, "VC2",
        KEY, "No_Key")
    command (1,
            SCHEDULED_TIME,\00:00:00\,FROM_REQUEST_START,
            JRM_SET_PAR(74,2475)
        ),
    command (2,
            SCHEDULED_TIME,\00:00:02\,FROM_PREVIOUS_START,
            JRM_SCI_PAR("SCI_I2_S1",12,1,0,"IDIS_SDIS","HSSL","ENABLE","DARK","DISABLE",0,0,50,5000,"LOW","LOW",
            "POINT",-57343,50,5000,"LOW","LOW","SPIN",0,"NO_SUMMED_SCI")
        ),
    command (3,
            SCHEDULED_TIME,\00:00:02\,FROM_PREVIOUS_START,
            JRM_START_HS_REC()
        ),
    command (4,
            SCHEDULED_TIME,\00:00:02\,FROM_PREVIOUS_START,
            JRM_SCIENCE()
        ),
    command (5,
            SCHEDULED_TIME,\00:06:46\,FROM_PREVIOUS_START,
            JRM_ERROR_LOG()
        ),
    command (6,

```

			JIR-IAPS-SY-002-2023	
			Issue	1.0
	JUNO/JIRAM		Page	27

```

        SCHEDULED_TIME,\00:00:02\,FROM_PREVIOUS_START,
        JRM_STOP_HS_REC()
    ),
    note(1,
        SCHEDULED_TIME,\00:00:04\,FROM_PREVIOUS_START,
        TEXT,\"Nadir\"
    ),
end;

request(JRM_033,
    START_TIME,2022-229T15:10:55.000,
    TITLE, "jm0440_JRM_Science",
    REQUESTOR, "JRMTEAM",
    PROCESSOR, "VC2",
    KEY, "No_Key")
command(1,
    SCHEDULED_TIME,\00:00:00\,FROM_REQUEST_START,
    JRM_SET_PAR(74,2475)
),
command(2,
    SCHEDULED_TIME,\00:00:02\,FROM_PREVIOUS_START,
JRM_SCI_PAR("SCI_I2_S1",12,1,0,"IDIS_SDIS","HSSL","ENABLE","DARK","DISABLE",0,0,50,5000,"LOW","LOW",
"POINT",-57343,50,5000,"LOW","LOW","SPIN",319,"NO_SUMMED_SCI")
),
command(3,
    SCHEDULED_TIME,\00:00:02\,FROM_PREVIOUS_START,
    JRM_START_HS_REC()
),
command(4,
    SCHEDULED_TIME,\00:00:02\,FROM_PREVIOUS_START,
    JRM_SCIENCE()
),
command(5,
    SCHEDULED_TIME,\00:06:46\,FROM_PREVIOUS_START,
    JRM_ERROR_LOG()
),
command(6,
    SCHEDULED_TIME,\00:00:02\,FROM_PREVIOUS_START,
    JRM_STOP_HS_REC()
),
    note(1,
        SCHEDULED_TIME,\00:00:04\,FROM_PREVIOUS_START,
        TEXT,\"Nadir\"
    ),
end;

request(JRM_034,
    START_TIME,2022-229T15:18:03.000,
    TITLE, "jm0440_JRM_Science",
    REQUESTOR, "JRMTEAM",
    PROCESSOR, "VC2",
    KEY, "No_Key")
command(1,
    SCHEDULED_TIME,\00:00:00\,FROM_REQUEST_START,
    JRM_SET_PAR(74,2475)
),
command(2,
    SCHEDULED_TIME,\00:00:02\,FROM_PREVIOUS_START,
JRM_SCI_PAR("SCI_I2_S1",12,1,0,"IDIS_SDIS","HSSL","ENABLE","DARK","DISABLE",0,0,50,5000,"LOW","LOW",
"POINT",-57343,50,5000,"LOW","LOW","SPIN",0,"NO_SUMMED_SCI")
),
command(3,
    SCHEDULED_TIME,\00:00:02\,FROM_PREVIOUS_START,
    JRM_START_HS_REC()
),
command(4,
    SCHEDULED_TIME,\00:00:02\,FROM_PREVIOUS_START,
    JRM_SCIENCE()
),
command(5,
    SCHEDULED_TIME,\00:06:46\,FROM_PREVIOUS_START,

```

			JIR-IAPS-SY-002-2023	
			Issue	1.0
	JUNO/JIRAM		Page	28

```

        JRM_ERROR_LOG ()
    ),
    command(6,
        SCHEDULED_TIME,\00:00:02\,FROM_PREVIOUS_START,
        JRM_STOP_HS_REC ()
    ),
    note(1,
        SCHEDULED_TIME,\00:00:04\,FROM_PREVIOUS_START,
        TEXT,\"Nadir\"
    ),
end;

request (JRM_035,
    START_TIME,2022-229T15:25:10.000,
    TITLE, "jm0440_JRM_Science",
    REQUESTOR, "JRMTEAM",
    PROCESSOR, "VC2",
    KEY, "No_Key")
    command(1,
        SCHEDULED_TIME,\00:00:00\,FROM_REQUEST_START,
        JRM_SET_PAR(74,2475)
    ),
    command(2,
        SCHEDULED_TIME,\00:00:02\,FROM_PREVIOUS_START,
        JRM_SCI_PAR("SCI_I2_S1",12,1,0,"IDIS_SDIS","HSSL","ENABLE","DARK","DISABLE",0,0,50,5000,"LOW","LOW",
        "POINT",-57343,50,5000,"LOW","LOW","SPIN",-319,"NO_SUMMED_SCI")
    ),
    command(3,
        SCHEDULED_TIME,\00:00:02\,FROM_PREVIOUS_START,
        JRM_START_HS_REC ()
    ),
    command(4,
        SCHEDULED_TIME,\00:00:02\,FROM_PREVIOUS_START,
        JRM_SCIENCE ()
    ),
    command(5,
        SCHEDULED_TIME,\00:06:46\,FROM_PREVIOUS_START,
        JRM_ERROR_LOG ()
    ),
    command(6,
        SCHEDULED_TIME,\00:00:02\,FROM_PREVIOUS_START,
        JRM_STOP_HS_REC ()
    ),
    note(1,
        SCHEDULED_TIME,\00:00:04\,FROM_PREVIOUS_START,
        TEXT,\"Nadir\"
    ),
end;

request (JRM_036,
    START_TIME,2022-229T15:32:18.000,
    TITLE, "jm0440_JRM_Science",
    REQUESTOR, "JRMTEAM",
    PROCESSOR, "VC2",
    KEY, "No_Key")
    command(1,
        SCHEDULED_TIME,\00:00:00\,FROM_REQUEST_START,
        JRM_SET_PAR(74,2475)
    ),
    command(2,
        SCHEDULED_TIME,\00:00:02\,FROM_PREVIOUS_START,
        JRM_SCI_PAR("SCI_I2_S1",13,1,0,"IDIS_SDIS","HSSL","ENABLE","DARK","DISABLE",0,0,50,5000,"LOW","LOW",
        "POINT",-57343,50,5000,"LOW","LOW","SPIN",0,"NO_SUMMED_SCI")
    ),
    command(3,
        SCHEDULED_TIME,\00:00:02\,FROM_PREVIOUS_START,
        JRM_START_HS_REC ()
    ),
    command(4,
        SCHEDULED_TIME,\00:00:02\,FROM_PREVIOUS_START,
        JRM_SCIENCE ()
    )

```

			JIR-IAPS-SY-002-2023		
			Issue	1.0	07/01/2023
	JUNO/JIRAM		Page	29	of 47

```

),
command(5,
  SCHEDULED_TIME,\00:07:16\,FROM_PREVIOUS_START,
  JRM_ERROR_LOG()
),
command(6,
  SCHEDULED_TIME,\00:00:02\,FROM_PREVIOUS_START,
  JRM_STOP_HS_REC()
),
note(1,
  SCHEDULED_TIME,\00:00:04\,FROM_PREVIOUS_START,
  TEXT,\"Nadir\"
),
end;

request(JRM_037,
  START_TIME,2022-229T15:39:56.000,
  TITLE, "jm0440_JRM_Science",
  REQUESTOR, "JRMTEAM",
  PROCESSOR, "VC2",
  KEY, "No_Key")
command(1,
  SCHEDULED_TIME,\00:00:00\,FROM_REQUEST_START,
  JRM_SET_PAR(74,0)
),
command(2,
  SCHEDULED_TIME,\00:00:02\,FROM_PREVIOUS_START,
  JRM_SCI_PAR("SCI_I2_S1",15,1,0,"IDIS_SDIS","HSSL","ENABLE","DARK","DISABLE",0,509,50,50,"LOW","LOW",
  "POINT",-57343,50,50,"LOW","LOW","SPIN",-9974,"NO_SUMMED_SCI")
),
command(3,
  SCHEDULED_TIME,\00:00:02\,FROM_PREVIOUS_START,
  JRM_START_HS_REC()
),
command(4,
  SCHEDULED_TIME,\00:00:02\,FROM_PREVIOUS_START,
  JRM_SCIENCE()
),
command(5,
  SCHEDULED_TIME,\00:08:19\,FROM_PREVIOUS_START,
  JRM_ERROR_LOG()
),
command(6,
  SCHEDULED_TIME,\00:00:02\,FROM_PREVIOUS_START,
  JRM_STOP_HS_REC()
),
note(1,
  SCHEDULED_TIME,\00:00:04\,FROM_PREVIOUS_START,
  TEXT,\"South Pole\"
),
end;

request(JRM_038,
  START_TIME,2022-229T15:48:35.000,
  TITLE, "jm0440_JRM_Science",
  REQUESTOR, "JRMTEAM",
  PROCESSOR, "VC2",
  KEY, "No_Key")
command(1,
  SCHEDULED_TIME,\00:00:00\,FROM_REQUEST_START,
  JRM_SET_PAR(74,0)
),
command(2,
  SCHEDULED_TIME,\00:00:02\,FROM_PREVIOUS_START,
  JRM_SCI_PAR("SCI_I2_S1",13,1,0,"IDIS_SDIS","HSSL","ENABLE","DARK","DISABLE",0,574,50,50,"LOW","LOW",
  "POINT",-57343,50,50,"LOW","LOW","SPIN",-8499,"NO_SUMMED_SCI")
),
command(3,
  SCHEDULED_TIME,\00:00:02\,FROM_PREVIOUS_START,
  JRM_START_HS_REC()
),

```

			JIR-IAPS-SY-002-2023	
			Issue	1.0
	JUNO/JIRAM		Page	30

```

command(4,
  SCHEDULED_TIME,\00:00:02\,FROM_PREVIOUS_START,
  JRM_SCIENCE()
),
command(5,
  SCHEDULED_TIME,\00:07:18\,FROM_PREVIOUS_START,
  JRM_ERROR_LOG()
),
command(6,
  SCHEDULED_TIME,\00:00:02\,FROM_PREVIOUS_START,
  JRM_STOP_HS_REC()
),
note(1,
  SCHEDULED_TIME,\00:00:04\,FROM_PREVIOUS_START,
  TEXT,\"South Pole\"
),
end;

request(JRM_039,
  START_TIME,2022-229T15:56:13.000,
  TITLE, "jm0440_JRM_Science",
  REQUESTOR, "JRMTEAM",
  PROCESSOR, "VC2",
  KEY, "No_Key")
command(1,
  SCHEDULED_TIME,\00:00:00\,FROM_REQUEST_START,
  JRM_SET_PAR(74,0)
),
command(2,
  SCHEDULED_TIME,\00:00:02\,FROM_PREVIOUS_START,
  JRM_SCI_PAR("SCI_I2_S1",13,1,0,"IDIS_SDIS","HSSL","ENABLE","DARK","DISABLE",0,557,50,50,"LOW","LOW",
"POINT",-57343,50,50,"LOW","LOW","SPIN",-7266,"NO_SUMMED_SCI")
),
command(3,
  SCHEDULED_TIME,\00:00:02\,FROM_PREVIOUS_START,
  JRM_START_HS_REC()
),
command(4,
  SCHEDULED_TIME,\00:00:02\,FROM_PREVIOUS_START,
  JRM_SCIENCE()
),
command(5,
  SCHEDULED_TIME,\00:07:18\,FROM_PREVIOUS_START,
  JRM_ERROR_LOG()
),
command(6,
  SCHEDULED_TIME,\00:00:02\,FROM_PREVIOUS_START,
  JRM_STOP_HS_REC()
),
note(1,
  SCHEDULED_TIME,\00:00:04\,FROM_PREVIOUS_START,
  TEXT,\"South Pole\"
),
end;

request(JRM_040,
  START_TIME,2022-229T16:03:51.000,
  TITLE, "jm0440_JRM_Science",
  REQUESTOR, "JRMTEAM",
  PROCESSOR, "VC2",
  KEY, "No_Key")
command(1,
  SCHEDULED_TIME,\00:00:00\,FROM_REQUEST_START,
  JRM_SET_PAR(74,0)
),
command(2,
  SCHEDULED_TIME,\00:00:02\,FROM_PREVIOUS_START,
  JRM_SCI_PAR("SCI_I2_S1",13,1,0,"IDIS_SDIS","HSSL","ENABLE","DARK","DISABLE",0,542,50,50,"LOW","LOW",
"POINT",-57343,50,50,"LOW","LOW","SPIN",-6265,"NO_SUMMED_SCI")
),
command(3,

```

			JIR-IAPS-SY-002-2023	
			Issue	1.0
	JUNO/JIRAM		Page	31

```

        SCHEDULED_TIME,\00:00:02\,FROM_PREVIOUS_START,
        JRM_START_HS_REC()
    ),
    command(4,
        SCHEDULED_TIME,\00:00:02\,FROM_PREVIOUS_START,
        JRM_SCIENCE()
    ),
    command(5,
        SCHEDULED_TIME,\00:07:18\,FROM_PREVIOUS_START,
        JRM_ERROR_LOG()
    ),
    command(6,
        SCHEDULED_TIME,\00:00:02\,FROM_PREVIOUS_START,
        JRM_STOP_HS_REC()
    ),
    note(1,
        SCHEDULED_TIME,\00:00:04\,FROM_PREVIOUS_START,
        TEXT,\"South Pole\"
    ),
end;

request(JRM_041,
    START_TIME,2022-229T16:11:28.000,
    TITLE, "jm0440_JRM_Science",
    REQUESTOR, "JRMTEAM",
    PROCESSOR, "VC2",
    KEY, "No_Key")
    command(1,
        SCHEDULED_TIME,\00:00:00\,FROM_REQUEST_START,
        JRM_SET_PAR(74,0)
    ),
    command(2,
        SCHEDULED_TIME,\00:00:02\,FROM_PREVIOUS_START,
JRM_SCI_PAR("SCI_I2_S1",13,1,0,"IDIS_SDIS","HSSL","ENABLE","DARK","DISABLE",0,530,50,50,"LOW","LOW",
"POINT",-57343,50,50,"LOW","LOW","SPIN",-5466,"NO_SUMMED_SCI")
    ),
    command(3,
        SCHEDULED_TIME,\00:00:02\,FROM_PREVIOUS_START,
        JRM_START_HS_REC()
    ),
    command(4,
        SCHEDULED_TIME,\00:00:02\,FROM_PREVIOUS_START,
        JRM_SCIENCE()
    ),
    command(5,
        SCHEDULED_TIME,\00:07:18\,FROM_PREVIOUS_START,
        JRM_ERROR_LOG()
    ),
    command(6,
        SCHEDULED_TIME,\00:00:02\,FROM_PREVIOUS_START,
        JRM_STOP_HS_REC()
    ),
    note(1,
        SCHEDULED_TIME,\00:00:04\,FROM_PREVIOUS_START,
        TEXT,\"South Pole\"
    ),
end;

request(JRM_042,
    START_TIME,2022-229T16:19:06.000,
    TITLE, "jm0440_JRM_Science",
    REQUESTOR, "JRMTEAM",
    PROCESSOR, "VC2",
    KEY, "No_Key")
    command(1,
        SCHEDULED_TIME,\00:00:00\,FROM_REQUEST_START,
        JRM_SET_PAR(74,0)
    ),
    command(2,
        SCHEDULED_TIME,\00:00:02\,FROM_PREVIOUS_START,

```

			JIR-IAPS-SY-002-2023	
			Issue	1.0
	JUNO/JIRAM		Page	32

```

JRM_SCI_PAR("SCI_I2_S1",13,1,0,"IDIS_SDIS","HSSL","ENABLE","DARK","DISABLE",0,520,50,50,"LOW","LOW",
"POINT",-57343,50,50,"LOW","LOW","SPIN",-4817,"NO_SUMMED_SCI")
),
command(3,
SCHEDULED_TIME,\00:00:02\,FROM_PREVIOUS_START,
JRM_START_HS_REC()
),
command(4,
SCHEDULED_TIME,\00:00:02\,FROM_PREVIOUS_START,
JRM_SCIENCE()
),
command(5,
SCHEDULED_TIME,\00:07:18\,FROM_PREVIOUS_START,
JRM_ERROR_LOG()
),
command(6,
SCHEDULED_TIME,\00:00:02\,FROM_PREVIOUS_START,
JRM_STOP_HS_REC()
),
note(1,
SCHEDULED_TIME,\00:00:04\,FROM_PREVIOUS_START,
TEXT,\"South Pole\"
),
end;

request(JRM_043,
START_TIME,2022-229T16:26:44.000,
TITLE, "jm0440_JRM_Science",
REQUESTOR, "JRMTEAM",
PROCESSOR, "VC2",
KEY, "No_Key")
command(1,
SCHEDULED_TIME,\00:00:00\,FROM_REQUEST_START,
JRM_SET_PAR(74,0)
),
command(2,
SCHEDULED_TIME,\00:00:02\,FROM_PREVIOUS_START,

JRM_SCI_PAR("SCI_I2_S1",13,1,0,"IDIS_SDIS","HSSL","ENABLE","DARK","DISABLE",0,512,50,50,"LOW","LOW",
"POINT",-57343,50,50,"LOW","LOW","SPIN",-4293,"NO_SUMMED_SCI")
),
command(3,
SCHEDULED_TIME,\00:00:02\,FROM_PREVIOUS_START,
JRM_START_HS_REC()
),
command(4,
SCHEDULED_TIME,\00:00:02\,FROM_PREVIOUS_START,
JRM_SCIENCE()
),
command(5,
SCHEDULED_TIME,\00:07:18\,FROM_PREVIOUS_START,
JRM_ERROR_LOG()
),
command(6,
SCHEDULED_TIME,\00:00:02\,FROM_PREVIOUS_START,
JRM_STOP_HS_REC()
),
note(1,
SCHEDULED_TIME,\00:00:04\,FROM_PREVIOUS_START,
TEXT,\"South Pole\"
),
end;

request(JRM_044,
START_TIME,2022-229T16:34:21.000,
TITLE, "jm0440_JRM_Science",
REQUESTOR, "JRMTEAM",
PROCESSOR, "VC2",
KEY, "No_Key")
command(1,
SCHEDULED_TIME,\00:00:00\,FROM_REQUEST_START,
JRM_SET_PAR(74,0)

```


			JIR-IAPS-SY-002-2023	
			Issue	1.0
	JUNO/JIRAM		Page	33

```

),
command(2,
    SCHEDULED_TIME,\00:00:02\,FROM_PREVIOUS_START,
JRM_SCI_PAR("SCI_I2_S1",13,1,0,"IDIS_SDIS","HSSL","ENABLE","DARK","DISABLE",0,506,50,50,"LOW","LOW",
"POINT",-57343,50,50,"LOW","LOW","SPIN",-3866,"NO_SUMMED_SCI")
),
command(3,
    SCHEDULED_TIME,\00:00:02\,FROM_PREVIOUS_START,
    JRM_START_HS_REC()
),
command(4,
    SCHEDULED_TIME,\00:00:02\,FROM_PREVIOUS_START,
    JRM_SCIENCE()
),
command(5,
    SCHEDULED_TIME,\00:07:19\,FROM_PREVIOUS_START,
    JRM_ERROR_LOG()
),
command(6,
    SCHEDULED_TIME,\00:00:02\,FROM_PREVIOUS_START,
    JRM_STOP_HS_REC()
),
note(1,
    SCHEDULED_TIME,\00:00:04\,FROM_PREVIOUS_START,
    TEXT,\"South Pole\"
),
end;

request(JRM_045,
    START_TIME,2022-229T16:41:59.000,
    TITLE, "jm0440_JRM_Science",
    REQUESTOR, "JRMTEAM",
    PROCESSOR, "VC2",
    KEY, "No_Key")
command(1,
    SCHEDULED_TIME,\00:00:00\,FROM_REQUEST_START,
    JRM_SET_PAR(74,0)
),
command(2,
    SCHEDULED_TIME,\00:00:02\,FROM_PREVIOUS_START,
JRM_SCI_PAR("SCI_I2_S1",13,1,0,"IDIS_SDIS","HSSL","ENABLE","DARK","DISABLE",0,502,50,50,"LOW","LOW",
"POINT",-57343,50,50,"LOW","LOW","SPIN",-3516,"NO_SUMMED_SCI")
),
command(3,
    SCHEDULED_TIME,\00:00:02\,FROM_PREVIOUS_START,
    JRM_START_HS_REC()
),
command(4,
    SCHEDULED_TIME,\00:00:02\,FROM_PREVIOUS_START,
    JRM_SCIENCE()
),
command(5,
    SCHEDULED_TIME,\00:07:18\,FROM_PREVIOUS_START,
    JRM_ERROR_LOG()
),
command(6,
    SCHEDULED_TIME,\00:00:02\,FROM_PREVIOUS_START,
    JRM_STOP_HS_REC()
),
note(1,
    SCHEDULED_TIME,\00:00:04\,FROM_PREVIOUS_START,
    TEXT,\"South Pole\"
),
end;

request(JRM_046,
    START_TIME,2022-229T16:49:37.000,
    TITLE, "jm0440_JRM_Science",
    REQUESTOR, "JRMTEAM",
    PROCESSOR, "VC2",
    KEY, "No_Key")

```

			JIR-IAPS-SY-002-2023		
			Issue	1.0	07/01/2023
	JUNO/JIRAM		Page	34	of 47

```

command(1,
    SCHEDULED_TIME,\00:00:00\,FROM_REQUEST_START,
    JRM_SET_PAR(74,2475)
),
command(2,
    SCHEDULED_TIME,\00:00:02\,FROM_PREVIOUS_START,
JRM_SCI_PAR("SCI_I2_S1",30,1,0,"IDIS_SDIS","HSSL","ENABLE","DARK","DISABLE",0,461,50,5000,"LOW","LOW",
", "POINT",-57343,50,5000,"LOW","LOW","SPIN",-6876,"NO_SUMMED_SCI")
),
command(3,
    SCHEDULED_TIME,\00:00:02\,FROM_PREVIOUS_START,
    JRM_START_HS_REC()
),
command(4,
    SCHEDULED_TIME,\00:00:02\,FROM_PREVIOUS_START,
    JRM_SCIENCE()
),
command(5,
    SCHEDULED_TIME,\00:15:58\,FROM_PREVIOUS_START,
    JRM_ERROR_LOG()
),
command(6,
    SCHEDULED_TIME,\00:00:02\,FROM_PREVIOUS_START,
    JRM_STOP_HS_REC()
),
note(1,
    SCHEDULED_TIME,\00:00:04\,FROM_PREVIOUS_START,
    TEXT,\"Atmosphere\"
),
end;

request(JRM_047,
    START_TIME,2022-229T17:05:53.000,
    TITLE, "jm0440_JRM_Science",
    REQUESTOR, "JRMTEAM",
    PROCESSOR, "VC2",
    KEY, "No_Key")

command(1,
    SCHEDULED_TIME,\00:00:00\,FROM_REQUEST_START,
    JRM_SET_PAR(74,2475)
),
command(2,
    SCHEDULED_TIME,\00:00:02\,FROM_PREVIOUS_START,
JRM_SCI_PAR("SCI_I2_S1",28,1,0,"IDIS_SDIS","HSSL","ENABLE","DARK","DISABLE",0,467,50,5000,"LOW","LOW",
", "POINT",-57343,50,5000,"LOW","LOW","SPIN",-6462,"NO_SUMMED_SCI")
),
command(3,
    SCHEDULED_TIME,\00:00:02\,FROM_PREVIOUS_START,
    JRM_START_HS_REC()
),
command(4,
    SCHEDULED_TIME,\00:00:02\,FROM_PREVIOUS_START,
    JRM_SCIENCE()
),
command(5,
    SCHEDULED_TIME,\00:14:58\,FROM_PREVIOUS_START,
    JRM_ERROR_LOG()
),
command(6,
    SCHEDULED_TIME,\00:00:02\,FROM_PREVIOUS_START,
    JRM_STOP_HS_REC()
),
note(1,
    SCHEDULED_TIME,\00:00:04\,FROM_PREVIOUS_START,
    TEXT,\"Atmosphere\"
),
end;

request(JRM_048,
    START_TIME,2022-229T17:21:08.000,
    TITLE, "jm0440_JRM_Science",

```

			JIR-IAPS-SY-002-2023		
			Issue	1.0	07/01/2023
	JUNO/JIRAM		Page	35	of 47

```

REQUESTOR, "JRMTEAM",
PROCESSOR, "VC2",
KEY, "No_Key")
command(1,
  SCHEDULED_TIME, \00:00:00\, FROM_REQUEST_START,
  JRM_SET_PAR(74, 2475)
),
command(2,
  SCHEDULED_TIME, \00:00:02\, FROM_PREVIOUS_START,

JRM_SCI_PAR("SCI_I2_S1", 28, 1, 0, "IDIS_SDIS", "HSSL", "ENABLE", "DARK", "DISABLE", 0, 444, 50, 5000, "LOW", "LOW", "POINT", -57343, 50, 5000, "LOW", "LOW", "SPIN", -6123, "NO_SUMMED_SCI")
),
command(3,
  SCHEDULED_TIME, \00:00:02\, FROM_PREVIOUS_START,
  JRM_START_HS_REC()
),
command(4,
  SCHEDULED_TIME, \00:00:02\, FROM_PREVIOUS_START,
  JRM_SCIENCE()
),
command(5,
  SCHEDULED_TIME, \00:14:58\, FROM_PREVIOUS_START,
  JRM_ERROR_LOG()
),
command(6,
  SCHEDULED_TIME, \00:00:02\, FROM_PREVIOUS_START,
  JRM_STOP_HS_REC()
),
note(1,
  SCHEDULED_TIME, \00:00:04\, FROM_PREVIOUS_START,
  TEXT, \ "Atmosphere" \
),
end;

request(JRM_049,
  START_TIME, 2022-229T17:36:23.000,
  TITLE, "jm0440_JRM_Science",
  REQUESTOR, "JRMTEAM",
  PROCESSOR, "VC2",
  KEY, "No_Key")
command(1,
  SCHEDULED_TIME, \00:00:00\, FROM_REQUEST_START,
  JRM_SET_PAR(74, 2475)
),
command(2,
  SCHEDULED_TIME, \00:00:02\, FROM_PREVIOUS_START,

JRM_SCI_PAR("SCI_I2_S1", 28, 1, 0, "IDIS_SDIS", "HSSL", "ENABLE", "DARK", "DISABLE", 0, 423, 50, 5000, "LOW", "LOW", "POINT", -57343, 50, 5000, "LOW", "LOW", "SPIN", -5838, "NO_SUMMED_SCI")
),
command(3,
  SCHEDULED_TIME, \00:00:02\, FROM_PREVIOUS_START,
  JRM_START_HS_REC()
),
command(4,
  SCHEDULED_TIME, \00:00:02\, FROM_PREVIOUS_START,
  JRM_SCIENCE()
),
command(5,
  SCHEDULED_TIME, \00:14:57\, FROM_PREVIOUS_START,
  JRM_ERROR_LOG()
),
command(6,
  SCHEDULED_TIME, \00:00:02\, FROM_PREVIOUS_START,
  JRM_STOP_HS_REC()
),
note(1,
  SCHEDULED_TIME, \00:00:04\, FROM_PREVIOUS_START,
  TEXT, \ "Atmosphere" \
),
end;

```

			JIR-IAPS-SY-002-2023	
			Issue	1.0
	JUNO/JIRAM		Page	36

```

request (JRM_050,
        START_TIME,2022-229T17:51:39.000,
        TITLE, "jm0440_JRM_Science",
        REQUESTOR, "JRMTEAM",
        PROCESSOR, "VC2",
        KEY, "No_Key")
command(1,
        SCHEDULED_TIME,\00:00:00\,FROM_REQUEST_START,
        JRM_SET_PAR(74,2475)
        ),
command(2,
        SCHEDULED_TIME,\00:00:02\,FROM_PREVIOUS_START,

JRM_SCI_PAR("SCI_I2_S1",28,1,0,"IDIS_SDIS","HSSL","ENABLE","DARK","DISABLE",0,407,50,5000,"LOW","LOW",
"POINT",-57343,50,5000,"LOW","LOW","SPIN",-5595,"NO_SUMMED_SCI")
        ),
command(3,
        SCHEDULED_TIME,\00:00:02\,FROM_PREVIOUS_START,
        JRM_START_HS_REC()
        ),
command(4,
        SCHEDULED_TIME,\00:00:02\,FROM_PREVIOUS_START,
        JRM_SCIENCE()
        ),
command(5,
        SCHEDULED_TIME,\00:14:56\,FROM_PREVIOUS_START,
        JRM_ERROR_LOG()
        ),
command(6,
        SCHEDULED_TIME,\00:00:02\,FROM_PREVIOUS_START,
        JRM_STOP_HS_REC()
        ),
        note(1,
        SCHEDULED_TIME,\00:00:04\,FROM_PREVIOUS_START,
        TEXT,\"Atmosphere\"
        ),
end;

request (JRM_051,
        START_TIME,2022-229T18:06:54.000,
        TITLE, "jm0440_JRM_Science",
        REQUESTOR, "JRMTEAM",
        PROCESSOR, "VC2",
        KEY, "No_Key")
command(1,
        SCHEDULED_TIME,\00:00:00\,FROM_REQUEST_START,
        JRM_SET_PAR(74,2475)
        ),
command(2,
        SCHEDULED_TIME,\00:00:02\,FROM_PREVIOUS_START,

JRM_SCI_PAR("SCI_I2_S1",28,1,0,"IDIS_SDIS","HSSL","ENABLE","DARK","DISABLE",0,392,50,5000,"LOW","LOW",
"POINT",-57343,50,5000,"LOW","LOW","SPIN",-5385,"NO_SUMMED_SCI")
        ),
command(3,
        SCHEDULED_TIME,\00:00:02\,FROM_PREVIOUS_START,
        JRM_START_HS_REC()
        ),
command(4,
        SCHEDULED_TIME,\00:00:02\,FROM_PREVIOUS_START,
        JRM_SCIENCE()
        ),
command(5,
        SCHEDULED_TIME,\00:14:56\,FROM_PREVIOUS_START,
        JRM_ERROR_LOG()
        ),
command(6,
        SCHEDULED_TIME,\00:00:02\,FROM_PREVIOUS_START,
        JRM_STOP_HS_REC()
        ),
        note(1,
        SCHEDULED_TIME,\00:00:04\,FROM_PREVIOUS_START,
        TEXT,\"Atmosphere\"

```

			JIR-IAPS-SY-002-2023	
			Issue	1.0
	JUNO/JIRAM		Page	37

```

),
end;

request (JRM_052,
        START_TIME,2022-229T18:22:09.000,
        TITLE, "jm0440_JRM_Science",
        REQUESTOR, "JRMTEAM",
        PROCESSOR, "VC2",
        KEY, "No_Key")
    command(1,
            SCHEDULED_TIME,\00:00:00\,FROM_REQUEST_START,
            JRM_SET_PAR(74,2475)
        ),
    command(2,
            SCHEDULED_TIME,\00:00:02\,FROM_PREVIOUS_START,
            JRM_SCI_PAR("SCI_I2_S1",28,1,0,"IDIS_SDIS","HSSL","ENABLE","DARK","DISABLE",0,379,50,5000,"LOW","LOW",
            "POINT",-57343,50,5000,"LOW","LOW","SPIN",-5202,"NO_SUMMED_SCI")
        ),
    command(3,
            SCHEDULED_TIME,\00:00:02\,FROM_PREVIOUS_START,
            JRM_START_HS_REC()
        ),
    command(4,
            SCHEDULED_TIME,\00:00:02\,FROM_PREVIOUS_START,
            JRM_SCIENCE()
        ),
    command(5,
            SCHEDULED_TIME,\00:14:56\,FROM_PREVIOUS_START,
            JRM_ERROR_LOG()
        ),
    command(6,
            SCHEDULED_TIME,\00:00:02\,FROM_PREVIOUS_START,
            JRM_STOP_HS_REC()
        ),
    note(1,
            SCHEDULED_TIME,\00:00:04\,FROM_PREVIOUS_START,
            TEXT,\"Atmosphere\"
        ),
end;

request (JRM_053,
        START_TIME,2022-229T18:37:24.000,
        TITLE, "jm0440_JRM_Science",
        REQUESTOR, "JRMTEAM",
        PROCESSOR, "VC2",
        KEY, "No_Key")
    command(1,
            SCHEDULED_TIME,\00:00:00\,FROM_REQUEST_START,
            JRM_SET_PAR(74,2475)
        ),
    command(2,
            SCHEDULED_TIME,\00:00:02\,FROM_PREVIOUS_START,
            JRM_SCI_PAR("SCI_I2_S1",28,1,0,"IDIS_SDIS","HSSL","ENABLE","DARK","DISABLE",0,368,50,5000,"LOW","LOW",
            "POINT",-57343,50,5000,"LOW","LOW","SPIN",-5042,"NO_SUMMED_SCI")
        ),
    command(3,
            SCHEDULED_TIME,\00:00:02\,FROM_PREVIOUS_START,
            JRM_START_HS_REC()
        ),
    command(4,
            SCHEDULED_TIME,\00:00:02\,FROM_PREVIOUS_START,
            JRM_SCIENCE()
        ),
    command(5,
            SCHEDULED_TIME,\00:14:57\,FROM_PREVIOUS_START,
            JRM_ERROR_LOG()
        ),
    command(6,
            SCHEDULED_TIME,\00:00:02\,FROM_PREVIOUS_START,
            JRM_STOP_HS_REC()
        ),
),

```

			JIR-IAPS-SY-002-2023	
			Issue	1.0
	JUNO/JIRAM		Page	38

```

note(1,
  SCHEDULED_TIME,\00:00:04\,FROM_PREVIOUS_START,
  TEXT,\"Atmosphere\"
),
end;

request(JRM_054,
  START_TIME,2022-229T18:52:39.000,
  TITLE, "jm0440_JRM_Science",
  REQUESTOR, "JRMTEAM",
  PROCESSOR, "VC2",
  KEY, "No_Key")
command(1,
  SCHEDULED_TIME,\00:00:00\,FROM_REQUEST_START,
  JRM_SET_PAR(74,2475)
),
command(2,
  SCHEDULED_TIME,\00:00:02\,FROM_PREVIOUS_START,
  JRM_SCI_PAR("SCI_I2_S1",20,1,0,"IDIS_SDIS","HSSL","ENABLE","DARK","DISABLE",0,509,50,5000,"LOW","LOW",
  "POINT",-57343,50,5000,"LOW","LOW","SPIN",-4885,"NO_SUMMED_SCI")
),
command(3,
  SCHEDULED_TIME,\00:00:02\,FROM_PREVIOUS_START,
  JRM_START_HS_REC()
),
command(4,
  SCHEDULED_TIME,\00:00:02\,FROM_PREVIOUS_START,
  JRM_SCIENCE()
),
command(5,
  SCHEDULED_TIME,\00:10:53\,FROM_PREVIOUS_START,
  JRM_ERROR_LOG()
),
command(6,
  SCHEDULED_TIME,\00:00:02\,FROM_PREVIOUS_START,
  JRM_STOP_HS_REC()
),
note(1,
  SCHEDULED_TIME,\00:00:04\,FROM_PREVIOUS_START,
  TEXT,\"Atmosphere\"
),
end;

request(JRM_055,
  START_TIME,2022-229T19:03:50.000,
  TITLE, "jm0440_JRM_Science",
  REQUESTOR, "JRMTEAM",
  PROCESSOR, "VC2",
  KEY, "No_Key")
command(1,
  SCHEDULED_TIME,\00:00:00\,FROM_REQUEST_START,
  JRM_SET_PAR(74,2475)
),
command(2,
  SCHEDULED_TIME,\00:00:02\,FROM_PREVIOUS_START,
  JRM_SCI_PAR("SCI_I2_S1",18,1,0,"IDIS_SDIS","HSSL","ENABLE","DARK","DISABLE",0,559,50,5000,"LOW","LOW",
  "POINT",-57343,50,5000,"LOW","LOW","SPIN",-4799,"NO_SUMMED_SCI")
),
command(3,
  SCHEDULED_TIME,\00:00:02\,FROM_PREVIOUS_START,
  JRM_START_HS_REC()
),
command(4,
  SCHEDULED_TIME,\00:00:02\,FROM_PREVIOUS_START,
  JRM_SCIENCE()
),
command(5,
  SCHEDULED_TIME,\00:09:52\,FROM_PREVIOUS_START,
  JRM_ERROR_LOG()
),
command(6,

```

			JIR-IAPS-SY-002-2023	
			Issue	1.0
	JUNO/JIRAM		Page	39

```

        SCHEDULED_TIME,\00:00:02\,FROM_PREVIOUS_START,
        JRM_STOP_HS_REC()
    ),
    note(1,
        SCHEDULED_TIME,\00:00:04\,FROM_PREVIOUS_START,
        TEXT,\"Atmosphere\"
    ),
end;

request(JRM_056,
    START_TIME,2022-229T19:14:00.000,
    TITLE, "jm0440_JRM_Science",
    REQUESTOR, "JRMTEAM",
    PROCESSOR, "VC2",
    KEY, "No_Key")
command(1,
    SCHEDULED_TIME,\00:00:00\,FROM_REQUEST_START,
    JRM_SET_PAR(74,2475)
),
command(2,
    SCHEDULED_TIME,\00:00:02\,FROM_PREVIOUS_START,
    JRM_SCI_PAR("SCI_I2_S1",18,1,0,"IDIS_SDIS","HSSL","ENABLE","DARK","DISABLE",0,550,50,5000,"LOW","LOW",
    ,"POINT",-57343,50,5000,"LOW","LOW","SPIN",-4719,"NO_SUMMED_SCI")
),
command(3,
    SCHEDULED_TIME,\00:00:02\,FROM_PREVIOUS_START,
    JRM_START_HS_REC()
),
command(4,
    SCHEDULED_TIME,\00:00:02\,FROM_PREVIOUS_START,
    JRM_SCIENCE()
),
command(5,
    SCHEDULED_TIME,\00:09:52\,FROM_PREVIOUS_START,
    JRM_ERROR_LOG()
),
command(6,
    SCHEDULED_TIME,\00:00:02\,FROM_PREVIOUS_START,
    JRM_STOP_HS_REC()
),
    note(1,
        SCHEDULED_TIME,\00:00:04\,FROM_PREVIOUS_START,
        TEXT,\"Atmosphere\"
    ),
end;

request(JRM_057,
    START_TIME,2022-229T19:24:10.000,
    TITLE, "jm0440_JRM_Science",
    REQUESTOR, "JRMTEAM",
    PROCESSOR, "VC2",
    KEY, "No_Key")
command(1,
    SCHEDULED_TIME,\00:00:00\,FROM_REQUEST_START,
    JRM_SET_PAR(74,2475)
),
command(2,
    SCHEDULED_TIME,\00:00:02\,FROM_PREVIOUS_START,
    JRM_SCI_PAR("SCI_I2_S1",18,1,0,"IDIS_SDIS","HSSL","ENABLE","DARK","DISABLE",0,541,50,5000,"LOW","LOW",
    ,"POINT",-57343,50,5000,"LOW","LOW","SPIN",-4644,"NO_SUMMED_SCI")
),
command(3,
    SCHEDULED_TIME,\00:00:02\,FROM_PREVIOUS_START,
    JRM_START_HS_REC()
),
command(4,
    SCHEDULED_TIME,\00:00:02\,FROM_PREVIOUS_START,
    JRM_SCIENCE()
),
command(5,
    SCHEDULED_TIME,\00:09:52\,FROM_PREVIOUS_START,

```

			JIR-IAPS-SY-002-2023		
			Issue	1.0	07/01/2023
	JUNO/JIRAM		Page	40	of 47

```

        JRM_ERROR_LOG ()
    ),
    command(6,
        SCHEDULED_TIME,\00:00:02\,FROM_PREVIOUS_START,
        JRM_STOP_HS_REC ()
    ),
    note(1,
        SCHEDULED_TIME,\00:00:04\,FROM_PREVIOUS_START,
        TEXT,\"Atmosphere\"
    ),
end;

request (JRM_058,
    START_TIME,2022-229T19:34:20.000,
    TITLE, "jm0440_JRM_Science",
    REQUESTOR, "JRMTEAM",
    PROCESSOR, "VC2",
    KEY, "No_Key")
    command(1,
        SCHEDULED_TIME,\00:00:00\,FROM_REQUEST_START,
        JRM_SET_PAR(74,2475)
    ),
    command(2,
        SCHEDULED_TIME,\00:00:02\,FROM_PREVIOUS_START,
        JRM_SCI_PAR("SCI_I2_S1",18,1,0,"IDIS_SDIS","HSSL","ENABLE","DARK","DISABLE",0,533,50,5000,"LOW","LOW",
        "POINT",-57343,50,5000,"LOW","LOW","SPIN",-4573,"NO_SUMMED_SCI")
    ),
    command(3,
        SCHEDULED_TIME,\00:00:02\,FROM_PREVIOUS_START,
        JRM_START_HS_REC ()
    ),
    command(4,
        SCHEDULED_TIME,\00:00:02\,FROM_PREVIOUS_START,
        JRM_SCIENCE ()
    ),
    command(5,
        SCHEDULED_TIME,\00:09:52\,FROM_PREVIOUS_START,
        JRM_ERROR_LOG ()
    ),
    command(6,
        SCHEDULED_TIME,\00:00:02\,FROM_PREVIOUS_START,
        JRM_STOP_HS_REC ()
    ),
    note(1,
        SCHEDULED_TIME,\00:00:04\,FROM_PREVIOUS_START,
        TEXT,\"Atmosphere\"
    ),
end;

request (JRM_059,
    START_TIME,2022-229T19:44:30.000,
    TITLE, "jm0440_JRM_Science",
    REQUESTOR, "JRMTEAM",
    PROCESSOR, "VC2",
    KEY, "No_Key")
    command(1,
        SCHEDULED_TIME,\00:00:00\,FROM_REQUEST_START,
        JRM_SET_PAR(74,2475)
    ),
    command(2,
        SCHEDULED_TIME,\00:00:02\,FROM_PREVIOUS_START,
        JRM_SCI_PAR("SCI_I2_S1",18,1,0,"IDIS_SDIS","HSSL","ENABLE","DARK","DISABLE",0,525,50,5000,"LOW","LOW",
        "POINT",-57343,50,5000,"LOW","LOW","SPIN",-4508,"NO_SUMMED_SCI")
    ),
    command(3,
        SCHEDULED_TIME,\00:00:02\,FROM_PREVIOUS_START,
        JRM_START_HS_REC ()
    ),
    command(4,
        SCHEDULED_TIME,\00:00:02\,FROM_PREVIOUS_START,
        JRM_SCIENCE ()
    ),

```


			JIR-IAPS-SY-002-2023		
			Issue	1.0	07/01/2023
	JUNO/JIRAM		Page	41	of 47

```

),
command(5,
  SCHEDULED_TIME,\00:09:52\,FROM_PREVIOUS_START,
  JRM_ERROR_LOG()
),
command(6,
  SCHEDULED_TIME,\00:00:02\,FROM_PREVIOUS_START,
  JRM_STOP_HS_REC()
),
note(1,
  SCHEDULED_TIME,\00:00:04\,FROM_PREVIOUS_START,
  TEXT,\"Atmosphere\"
),
end;

request(JRM_060,
  START_TIME,2022-229T19:54:40.000,
  TITLE, "jm0440_JRM_Science",
  REQUESTOR, "JRMTEAM",
  PROCESSOR, "VC2",
  KEY, "No_Key")
command(1,
  SCHEDULED_TIME,\00:00:00\,FROM_REQUEST_START,
  JRM_SET_PAR(74,2475)
),
command(2,
  SCHEDULED_TIME,\00:00:02\,FROM_PREVIOUS_START,
  JRM_SCI_PAR("SCI_I2_S1",18,1,0,"IDIS_SDIS","HSSL","ENABLE","DARK","DISABLE",0,519,50,5000,"LOW","LOW",
  ,"POINT",-57343,50,5000,"LOW","LOW","SPIN",-4446,"NO_SUMMED_SCI")
),
command(3,
  SCHEDULED_TIME,\00:00:02\,FROM_PREVIOUS_START,
  JRM_START_HS_REC()
),
command(4,
  SCHEDULED_TIME,\00:00:02\,FROM_PREVIOUS_START,
  JRM_SCIENCE()
),
command(5,
  SCHEDULED_TIME,\00:09:52\,FROM_PREVIOUS_START,
  JRM_ERROR_LOG()
),
command(6,
  SCHEDULED_TIME,\00:00:02\,FROM_PREVIOUS_START,
  JRM_STOP_HS_REC()
),
note(1,
  SCHEDULED_TIME,\00:00:04\,FROM_PREVIOUS_START,
  TEXT,\"Atmosphere\"
),
end;

request(JRM_061,
  START_TIME,2022-229T20:04:50.000,
  TITLE, "jm0440_JRM_Science",
  REQUESTOR, "JRMTEAM",
  PROCESSOR, "VC2",
  KEY, "No_Key")
command(1,
  SCHEDULED_TIME,\00:00:00\,FROM_REQUEST_START,
  JRM_SET_PAR(74,2475)
),
command(2,
  SCHEDULED_TIME,\00:00:02\,FROM_PREVIOUS_START,
  JRM_SCI_PAR("SCI_I2_S1",18,1,0,"IDIS_SDIS","HSSL","ENABLE","DARK","DISABLE",0,512,50,5000,"LOW","LOW",
  ,"POINT",-57343,50,5000,"LOW","LOW","SPIN",-4386,"NO_SUMMED_SCI")
),
command(3,
  SCHEDULED_TIME,\00:00:02\,FROM_PREVIOUS_START,
  JRM_START_HS_REC()
),

```

			JIR-IAPS-SY-002-2023	
			Issue	1.0
	JUNO/JIRAM		Page	42

```

command(4,
    SCHEDULED_TIME,\00:00:02\,FROM_PREVIOUS_START,
    JRM_SCIENCE()
),
command(5,
    SCHEDULED_TIME,\00:09:52\,FROM_PREVIOUS_START,
    JRM_ERROR_LOG()
),
command(6,
    SCHEDULED_TIME,\00:00:02\,FROM_PREVIOUS_START,
    JRM_STOP_HS_REC()
),
note(1,
    SCHEDULED_TIME,\00:00:04\,FROM_PREVIOUS_START,
    TEXT,\"Atmosphere\"
),
end;

request(JRM_062,
    START_TIME,2022-229T20:15:00.000,
    TITLE, \"jm0440_JRM_Science\",
    REQUESTOR, \"JRMTEAM\",
    PROCESSOR, \"VC2\",
    KEY, \"No_Key\")
command(1,
    SCHEDULED_TIME,\00:00:00\,FROM_REQUEST_START,
    JRM_SET_PAR(74,2475)
),
command(2,
    SCHEDULED_TIME,\00:00:02\,FROM_PREVIOUS_START,
    JRM_SCI_PAR(\"SCI_I2_S1\",18,1,0,\"IDIS_SDIS\", \"HSSL\", \"ENABLE\", \"DARK\", \"DISABLE\",0,505,50,5000,\"LOW\", \"LOW\", \"POINT\",-57343,50,5000,\"LOW\", \"LOW\", \"SPIN\",-4333,\"NO_SUMMED_SCI\")
),
command(3,
    SCHEDULED_TIME,\00:00:02\,FROM_PREVIOUS_START,
    JRM_START_HS_REC()
),
command(4,
    SCHEDULED_TIME,\00:00:02\,FROM_PREVIOUS_START,
    JRM_SCIENCE()
),
command(5,
    SCHEDULED_TIME,\00:09:52\,FROM_PREVIOUS_START,
    JRM_ERROR_LOG()
),
command(6,
    SCHEDULED_TIME,\00:00:02\,FROM_PREVIOUS_START,
    JRM_STOP_HS_REC()
),
note(1,
    SCHEDULED_TIME,\00:00:04\,FROM_PREVIOUS_START,
    TEXT,\"Atmosphere\"
),
end;

request(JRM_063,
    START_TIME,2022-229T20:25:11.000,
    TITLE, \"jm0440_JRM_Science\",
    REQUESTOR, \"JRMTEAM\",
    PROCESSOR, \"VC2\",
    KEY, \"No_Key\")
command(1,
    SCHEDULED_TIME,\00:00:00\,FROM_REQUEST_START,
    JRM_SET_PAR(74,2475)
),
command(2,
    SCHEDULED_TIME,\00:00:02\,FROM_PREVIOUS_START,
    JRM_SCI_PAR(\"SCI_I2_S1\",18,1,0,\"IDIS_SDIS\", \"HSSL\", \"ENABLE\", \"DARK\", \"DISABLE\",0,500,50,5000,\"LOW\", \"LOW\", \"POINT\",-57343,50,5000,\"LOW\", \"LOW\", \"SPIN\",-4279,\"NO_SUMMED_SCI\")
),
command(3,

```

			JIR-IAPS-SY-002-2023	
			Issue	1.0
	JUNO/JIRAM		Page	43

```

        SCHEDULED_TIME,\00:00:02\,FROM_PREVIOUS_START,
        JRM_START_HS_REC()
    ),
    command(4,
        SCHEDULED_TIME,\00:00:02\,FROM_PREVIOUS_START,
        JRM_SCIENCE()
    ),
    command(5,
        SCHEDULED_TIME,\00:09:51\,FROM_PREVIOUS_START,
        JRM_ERROR_LOG()
    ),
    command(6,
        SCHEDULED_TIME,\00:00:02\,FROM_PREVIOUS_START,
        JRM_STOP_HS_REC()
    ),
    note(1,
        SCHEDULED_TIME,\00:00:04\,FROM_PREVIOUS_START,
        TEXT,\"Atmosphere\"
    ),
end;

request(JRM_064,
    START_TIME,2022-229T20:35:21.000,
    TITLE,\"jm0440_JRM_Science\",
    REQUESTOR,\"JRMTEAM\",
    PROCESSOR,\"VC2\",
    KEY,\"No_Key\")
    command(1,
        SCHEDULED_TIME,\00:00:00\,FROM_REQUEST_START,
        JRM_SET_PAR(74,2475)
    ),
    command(2,
        SCHEDULED_TIME,\00:00:02\,FROM_PREVIOUS_START,
JRM_SCI_PAR(\"SCI_I2_S1\",18,1,0,\"IDIS_SDIS\",\"HSSL\",\"ENABLE\",\"DARK\",\"DISABLE\",0,494,50,5000,\"LOW\",\"LOW
\", \"POINT\",-57343,50,5000,\"LOW\",\"LOW\",\"SPIN\",-4230,\"NO_SUMMED_SCI\")
    ),
    command(3,
        SCHEDULED_TIME,\00:00:02\,FROM_PREVIOUS_START,
        JRM_START_HS_REC()
    ),
    command(4,
        SCHEDULED_TIME,\00:00:02\,FROM_PREVIOUS_START,
        JRM_SCIENCE()
    ),
    command(5,
        SCHEDULED_TIME,\00:09:51\,FROM_PREVIOUS_START,
        JRM_ERROR_LOG()
    ),
    command(6,
        SCHEDULED_TIME,\00:00:02\,FROM_PREVIOUS_START,
        JRM_STOP_HS_REC()
    ),
    note(1,
        SCHEDULED_TIME,\00:00:04\,FROM_PREVIOUS_START,
        TEXT,\"Atmosphere\"
    ),
end;

request(JRM_065,
    START_TIME,2022-229T20:45:31.000,
    TITLE,\"jm0440_JRM_Science\",
    REQUESTOR,\"JRMTEAM\",
    PROCESSOR,\"VC2\",
    KEY,\"No_Key\")
    command(1,
        SCHEDULED_TIME,\00:00:00\,FROM_REQUEST_START,
        JRM_SET_PAR(74,2475)
    ),
    command(2,
        SCHEDULED_TIME,\00:00:02\,FROM_PREVIOUS_START,

```

			JIR-IAPS-SY-002-2023	
			Issue	1.0
	JUNO/JIRAM		Page	44

```

JRM_SCI_PAR("SCI_I2_S1",18,1,0,"IDIS_SDIS","HSSL","ENABLE","DARK","DISABLE",0,488,50,5000,"LOW","LOW",
", "POINT",-57343,50,5000,"LOW","LOW","SPIN",-4183,"NO_SUMMED_SCI")
),
command(3,
SCHEDULED_TIME,\00:00:02\,FROM_PREVIOUS_START,
JRM_START_HS_REC()
),
command(4,
SCHEDULED_TIME,\00:00:02\,FROM_PREVIOUS_START,
JRM_SCIENCE()
),
command(5,
SCHEDULED_TIME,\00:09:51\,FROM_PREVIOUS_START,
JRM_ERROR_LOG()
),
command(6,
SCHEDULED_TIME,\00:00:02\,FROM_PREVIOUS_START,
JRM_STOP_HS_REC()
),
note(1,
SCHEDULED_TIME,\00:00:04\,FROM_PREVIOUS_START,
TEXT,\"Atmosphere\"
),
end;

request(JRM_066,
START_TIME,2022-229T20:55:41.000,
TITLE, "jm0440_JRM_Science",
REQUESTOR, "JRMTEAM",
PROCESSOR, "VC2",
KEY, "No_Key")
command(1,
SCHEDULED_TIME,\00:00:00\,FROM_REQUEST_START,
JRM_SET_PAR(74,2475)
),
command(2,
SCHEDULED_TIME,\00:00:02\,FROM_PREVIOUS_START,

JRM_SCI_PAR("SCI_I2_S1",18,1,0,"IDIS_SDIS","HSSL","ENABLE","DARK","DISABLE",0,488,50,5000,"LOW","LOW",
", "POINT",-57343,50,5000,"LOW","LOW","SPIN",-4167,"NO_SUMMED_SCI")
),
command(3,
SCHEDULED_TIME,\00:00:02\,FROM_PREVIOUS_START,
JRM_START_HS_REC()
),
command(4,
SCHEDULED_TIME,\00:00:02\,FROM_PREVIOUS_START,
JRM_SCIENCE()
),
command(5,
SCHEDULED_TIME,\00:09:51\,FROM_PREVIOUS_START,
JRM_ERROR_LOG()
),
command(6,
SCHEDULED_TIME,\00:00:02\,FROM_PREVIOUS_START,
JRM_STOP_HS_REC()
),
note(1,
SCHEDULED_TIME,\00:00:04\,FROM_PREVIOUS_START,
TEXT,\"Atmosphere\"
),
end;

request(JRM_067,
START_TIME,2022-229T21:10:04.000,
TITLE, "jm0440_JRM-POWER_OFF",
REQUESTOR, "JRMTEAM",
PROCESSOR, "VC2",
KEY, "No_Key")
command(1,
SCHEDULED_TIME,\00:00:00\,FROM_REQUEST_START,
VM_LOAD(21,"d:/seq/hlfp_spm_safe_jiram.mod")

```

			JIR-IAPS-SY-002-2023	
			Issue	1.0
	JUNO/JIRAM		Page	45

```

),
note(1,
SCHEDULED_TIME,\00:00:04\,FROM_PREVIOUS_START,
TEXT,\"NaN\"
),
end;

request(JRM_068,
START_TIME,2022-229T21:10:20.000,
TITLE, "jm0440_JRM_Heater_Op",
REQUESTOR, "JRMTEAM",
PROCESSOR, "VC2",
KEY, "No_Key")
command(1,
SCHEDULED_TIME,\00:00:00\,FROM_REQUEST_START,
THRM_SET_PT_SEL("JIRAM_OH","NON_OPERATIONAL")
),
command(2,
SCHEDULED_TIME,\00:00:01\,FROM_PREVIOUS_START,
THRM_SET_PT_SEL("JIRAM_DECON","NON_OPERATIONAL")
),
command(3,
SCHEDULED_TIME,\00:00:02\,FROM_PREVIOUS_START,
THRM_SET_PT_SEL("JIRAM_ELECT_BF","NON_OPERATIONAL")
),
note(1,
SCHEDULED_TIME,\00:00:04\,FROM_PREVIOUS_START,
TEXT,\"NaN\"
),
end;

request(JRM_069,
START_TIME,2022-230T04:24:11.000,
TITLE, "jm0440_JRM_Heater_Op",
REQUESTOR, "JRMTEAM",
PROCESSOR, "VC2",
KEY, "No_Key")
command(1,
SCHEDULED_TIME,\00:00:00\,FROM_REQUEST_START,
THRM_SET_PT_SEL("JIRAM_OH","OPERATIONAL")
),
command(2,
SCHEDULED_TIME,\00:00:01\,FROM_PREVIOUS_START,
THRM_SET_PT_SEL("JIRAM_DECON","OPERATIONAL")
),
command(3,
SCHEDULED_TIME,\03:10:00\,FROM_PREVIOUS_START,
THRM_SET_PT_SEL("JIRAM_ELECT_BF","OPERATIONAL")
),
note(1,
SCHEDULED_TIME,\00:00:04\,FROM_PREVIOUS_START,
TEXT,\"NaN\"
),
end;

request(JRM_070,
START_TIME,2022-230T09:45:11.000,
TITLE, "jm0440_JRM-POWER_ON",
REQUESTOR, "JRMTEAM",
PROCESSOR, "VC2",
KEY, "No_Key")
spawn(1,
SCHEDULED_TIME,\00:00:00\,FROM_REQUEST_START,
REQ_ENGINE_ID,21,RT_on_board_block(jiram_pwr_on)
),
note(1,
SCHEDULED_TIME,\00:00:04\,FROM_PREVIOUS_START,
TEXT,\"NaN\"
),
end;

request(JRM_071,
START_TIME,2022-230T09:47:54.000,

```

			JIR-IAPS-SY-002-2023	
			Issue	1.0
	JUNO/JIRAM		Page	46

```

TITLE, "jm0440_JRM_StandBy",
REQUESTOR, "JRMTEAM",
PROCESSOR, "VC2",
KEY, "No_Key")
command(1,
  SCHEDULED_TIME,\00:00:00\,FROM_REQUEST_START,
  JRM_SET_PAR(111,10)
),
command(2,
  SCHEDULED_TIME,\00:00:04\,FROM_PREVIOUS_START,
  JRM_STANDBY("ON","ON","OFF")
),
command(3,
  SCHEDULED_TIME,\00:00:04\,FROM_PREVIOUS_START,
  JRM_SCI_PAR("SCI_I1_S3",120,1,10,"IDIS_SDIS","HSSL","ENABLE","DARK","DISABLE",0,956,2,150,"LOW","LOW",
  "POINT",-57343,2,150,"LOW","LOW","SPIN",0,"NO_SUMMED_SCI")
),
  note(1,
    SCHEDULED_TIME,\00:00:04\,FROM_PREVIOUS_START,
    TEXT,\"NaN\"
  ),
end;

request(JRM_072,
  START_TIME,2022-230T09:52:26.000,
  TITLE, "jm0440_JRM_Science",
  REQUESTOR, "JRMTEAM",
  PROCESSOR, "VC2",
  KEY, "No_Key")
command(1,
  SCHEDULED_TIME,\00:00:00\,FROM_REQUEST_START,
  JRM_SET_PAR(74,2375)
),
command(2,
  SCHEDULED_TIME,\00:00:02\,FROM_PREVIOUS_START,
  JRM_SCI_PAR("SCI_I1_S1",10,1,0,"IDIS_SDIS","HSSL","ENABLE","DARK","DISABLE",0,430,250,5000,"LOW","LOW",
  "POINT",-57343,250,5000,"LOW","LOW","SPIN",-17972,"NO_SUMMED_SCI")
),
command(3,
  SCHEDULED_TIME,\00:00:02\,FROM_PREVIOUS_START,
  JRM_START_HS_REC()
),
command(4,
  SCHEDULED_TIME,\00:00:02\,FROM_PREVIOUS_START,
  JRM_SCIENCE()
),
command(5,
  SCHEDULED_TIME,\00:05:47\,FROM_PREVIOUS_START,
  JRM_ERROR_LOG()
),
command(6,
  SCHEDULED_TIME,\00:00:02\,FROM_PREVIOUS_START,
  JRM_STOP_HS_REC()
),
  note(1,
    SCHEDULED_TIME,\00:00:04\,FROM_PREVIOUS_START,
    TEXT,\"Ganymede\"
  ),
end;

request(JRM_073,
  START_TIME,2022-230T09:58:32.000,
  TITLE, "jm0440_JRM_Science",
  REQUESTOR, "JRMTEAM",
  PROCESSOR, "VC2",
  KEY, "No_Key")
command(1,
  SCHEDULED_TIME,\00:00:00\,FROM_REQUEST_START,
  JRM_SET_PAR(74,0)
),
command(2,

```

			JIR-IAPS-SY-002-2023	
			Issue	1.0
	JUNO/JIRAM		Page	47

```

SCHEDULED_TIME,\00:00:02\,FROM_PREVIOUS_START,

JRM_SCI_PAR("SCI_I1_S1",10,1,0,"IDIS_SDIS","HSSL","ENABLE","DARK","DISABLE",0,431,5000,5000,"LOW","LOW",
"POINT",-57343,5000,5000,"LOW","LOW","SPIN",-17924,"NO_SUMMED_SCI")
),
command(3,
SCHEDULED_TIME,\00:00:02\,FROM_PREVIOUS_START,
JRM_START_HS_REC()
),
command(4,
SCHEDULED_TIME,\00:00:02\,FROM_PREVIOUS_START,
JRM_SCIENCE()
),
command(5,
SCHEDULED_TIME,\00:05:47\,FROM_PREVIOUS_START,
JRM_ERROR_LOG()
),
command(6,
SCHEDULED_TIME,\00:00:02\,FROM_PREVIOUS_START,
JRM_STOP_HS_REC()
),
note(1,
SCHEDULED_TIME,\00:00:04\,FROM_PREVIOUS_START,
TEXT,\"Ganymede\"
),
end;

request(JRM_074,
START_TIME,2022-230T10:04:31.000,
TITLE, "jm0440_JRM-POWER_OFF",
REQUESTOR, "JRMTEAM",
PROCESSOR, "VC2",
KEY, "No_Key")

command(1,
SCHEDULED_TIME,\00:00:00\,FROM_REQUEST_START,
VM_LOAD(21,"d:/seq/hlfp_spm_safe_jiram.mod")
),
note(1,
SCHEDULED_TIME,\00:00:04\,FROM_PREVIOUS_START,
TEXT,\"NaN\"
),
end;

request(JRM_075,
START_TIME,2022-230T10:04:47.000,
TITLE, "jm0440_JRM_Heater_Op",
REQUESTOR, "JRMTEAM",
PROCESSOR, "VC2",
KEY, "No_Key")

command(1,
SCHEDULED_TIME,\00:00:00\,FROM_REQUEST_START,
THRM_SET_PT_SEL("JIRAM_OH","NON_OPERATIONAL")
),
command(2,
SCHEDULED_TIME,\00:00:01\,FROM_PREVIOUS_START,
THRM_SET_PT_SEL("JIRAM_DECON","NON_OPERATIONAL")
),
command(3,
SCHEDULED_TIME,\00:00:02\,FROM_PREVIOUS_START,
THRM_SET_PT_SEL("JIRAM_ELECT_BP","NON_OPERATIONAL")
),
end;

$$EOF

```